

PAVENDAR BHARATHIDASAN COLLEGE OF ARTS AND SCIENCE

INTERNET

QUESTION BANK (3 UNITS)

Subject Code: 16CCCA4

Class: I B.COM (CA)

Unit I

2 Mark Questions

1) Define Internet?

- Internet is Worldwide System of Computer Networks
- The Internet is the Global system of interconnected computer networks.
- Use the internet protocols suite for TCP/IP.
- Direct link between by World Wide Web.
- That is called internet.

2) What do you mean by Webpage (or) Define Webpage?

- Webpage is a document.
- Commonly written in the Hyper Text Mark-up Language.
- It contains text, graphics, and hyperlinks.
- A hyper text document connected to the World Wide Web.

3) What do you mean by WIFI?

- WIFI is a wireless connection.
- WIFI allows you to connect to a network.
- Wireless routers or access point in the internet.
- That is called WIFI.

4) Expansion of ADSL?

- ADSL stands for **Asymmetric Digital Subscriber Line.**

5) Any two Features of the Internet?

- The internet is a collection of computer that share information.
- Home users commonly use a phone modem, cable modem and DSL connection to connect to the internet.
- An internet service provider connected the home user to other computer.

6) Any two purpose of the Internet?

- The internet is the biggest player on the creation of the concept of globalization today.
- The computer anywhere in the world dedicated router and server.
- It can send and receive all kinds of information such as text, graphics, and voice, video and computer programs.

7) Any three advantages of internet?

- Powerful search engine.
- Reduces the costs.
- Flow cost of initial connection.
- Information an almost every subject imaginable.

8) Any two disadvantages of internet?

- Internet as a lot of 'cheaper' sites.
- Spam and advertising.
- Identify hacking, virus and cheating.

9) Different types of networks?

- LAN (Local area networks)
- WAN(Wide area networks)
- MAN(Metropolitan area networks)

10) Define Networks?

- A network consists of two or more computers.
- Linked in order to share resources such as printer, and DS.
- Exchanges file or allow electronic communication.
- Linked through cables, telephone, radio waves, satellites etc.

11) What do you mean by ISP?

- ISP stands for Internet Service Provider (ISP).
- The ISP connects to its customer using a data transmission technology.
- For delivering internet protocols packet or frames.
- Such as dial- up connection, cable modem, wireless or high speed interconnections.

12) Expand the term ISP?

- ISP stands for Internet Service Provider (ISP).

13) Define Modem?

- Modem is an analogy signal convert to digital signal.
- Transmit data over phone lines.
- Convert data to audio tones and transmit the data over the phone lines
- That is called modem.

14) What is World Wide Web?

- The World Wide Web (WWW) was born in 1992.
- Wwww is an information system on the internet.
- This allows documents to be connected to other documents by hyper links.
- To search for information by moving from one document to another.

15) Different types internet connection?

- Dial up Connection
- DSL Connection
- Cable Connection
- WIFI Connection
- Satellite Connection
- Cellular Connection

16) Expands for WWW, SMTP, TCP / IP AND HTTP?

- WWW stands for World Wide Web (WWW).
- SMTP stands for Simple Mail Transfer protocols (SMTP).
- TCP / IP stand for Transmissions Control Protocols.
- IP stands for Internet Protocols.
- HTTP stands for Hyper Text Transfer protocols (HTTP).

17) Mention any the Current Wireless system?

- Cellular system
- Wireless LAN
- Satellite system
- Paying system
- PANS (Bluetooth)

18) Define Bluetooth?

- Bluetooth is a short range wireless communication technology.
- Interconnecting of mobile phone, computer and other electronic devices.
- It shares with voice, data, music, photos and video and other information.

4 Mark Questions

1) Write a note on ISDN Modem?

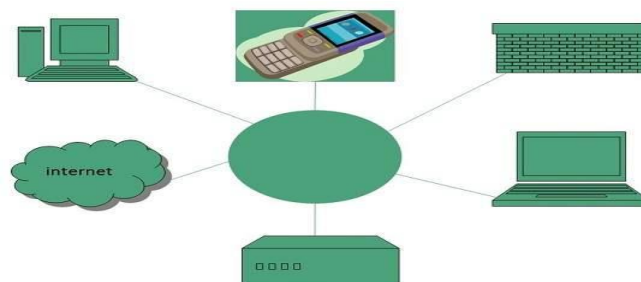
- ISDN stands for Integrated Service Digital Network (ISDN)
- ISDN is set of Communication.
- Digital transmission of voice, video, data and other network services.
- It was first define in 1988.
- ISDN is a circuit switched telephone system.

2) What do you know about Bluetooth?

- Wireless protocol.
- Exchange information from one enabled device to another.
- Connect several devices, overcoming problems of synchronization.
- It functions within 100 feet.
- It uses a radio technology.

3) What is Internet? Explain it?

- Internet is worldwide system of computer networks
- The Internet is the Global system of interconnected computer networks.
- Use the internet protocols suite for TCP/IP.
- Direct link between by World Wide Web.
- That is called internet.



4) Write a note on various uses of internet?

- Buying and selling process.
- Advertising and auctions.
- Education tool.
- Home banking.
- Marketing analysis.
- Mail contacts.
- Pictures and movie.
- Software downloads.
- Source of information.
- Finding partners.

5) Features of Cable Modem in Internet?

- Hardware devices.
- Communicate with ISP.
- Over landing connection.
- Analog signal into digital signal.

6) Discuss the Features of a Modem?

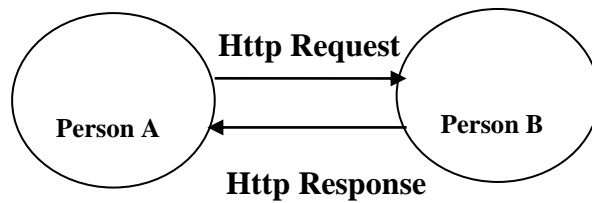
- Automatic cable sensor.
- Automatic calling card dialling.
- Caller ID
- Call progress detection.
- Analog cellular communication.
- Dialling stored phone number.

7) What is Web Server?

- A Web server is a program.
- That use Http (Hyper Text Transfer Protocol) and other protocols.
- To respond to client requests made over the World Wide Web (www).
- The web server process is an example of the client and server model.
- All computers that host websites must have web server software.

A web server work

- A web server processing incoming network requests over HTTP and several other related protocols.
- The primary function of a web server is to store, process and deliver web pages to client.
- The communication between client and server takes place using the Hyper Text Transfer Protocol (HTTP).



Client

- Client request to the server for data or information.
- Client performs some logical function.

Server

- Servers serve the data or information.
- Fulfils the requirements of the client and sends the results back to the client.

8) How to create on websites?

Websites

- A websites is a collection of web pages.
- Documents that are accessed through the internet.
- A location connected to the internet that maintained one or more pages on the www.
- Includes that images, video, audio and hyper links.

Create on Websites

Step 1: choose a domain name.

Step 2: register a domain and sing up with web hosting.

Step 3: set up websites using word press (web host).

Step 4: customize your website design and structure.

Step 5: add important pages and content.

Step 6: set up navigation menu.

Step 7: add an online store (optional).

7 Mark Questions

1) Mention the Features of Bluetooth?

- The key features of Bluetooth.
 1. Less complication.
 2. Less power consumption.
 3. Available at cheaper rates.

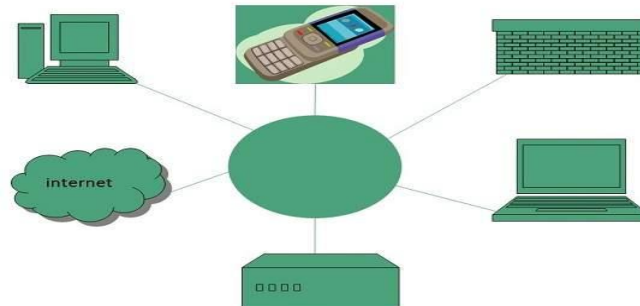
4. Robustness.
5. Connectivity.
6. Easy transport.

2) Bring out various uses of internet?

- Buying and selling process.
- Advertising and auctions.
- Education tool.
- Home banking.
- Marketing analysis.
- Mail contacts.
- Pictures and movie.
- Software downloads.
- Source of information.
- Finding partners.

3) Briefly discuss in Internet? Advantage and disadvantage in internet?

- Internet is worldwide system of computer networks
- The Internet is the Global system of interconnected computer networks.
- Use the internet protocols suite for TCP/IP.
- Direct link between by World Wide Web.
- That is called internet.



Advantage

- Powerful search engine.
- Reduces the costs.
- Flow cost of initial connection.
- Information an almost every subject imaginable.

Disadvantage

- Internet as a lot of 'cheaper' sites.
- Spam and advertising.
- Identify hacking, virus and cheating.

4) Explain details of history of Internet?

- Sputnik - 1957
- Wide area network -1965
- ARPANET – 1969
- NCP Protocol – 1970
- E-Mail – 1972
- TCP – 1974
- Xanadu -1981
- Apache - 1995
- Present day – Millions of users

Unit II

2 Mark Questions

1) What is animation?

- The world animation is generated from word 'Anime' which means life.
- Animation is the rapid display of a sequence of images of 2D and 3D.

2) What do you know about Browser?

- A web browser can be a graphical user interface.
- A web browser or simply "browser" is an application used to access and view websites.
- Text based like lynx and links.

3) Name of any two internet browser?

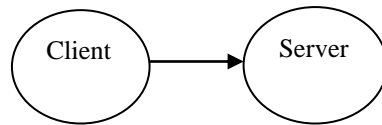
- Microsoft internet explorer
- Google chrome
- Mozilla firebox
- Safari
- Netscape navigator
- Opera

4) Define websites?

- A website is a collection of web pages.
- Documents that are accessed through the internet.
- A location connected to the internet that maintains one or more pages on the www.
- Includes images, video, audio and hyperlinks.

5) Define web server?

- A web server is a program.
- Transmits response to client for web resource.



6) What is Frame?

- Use of multiple sections on a web presentation.
- Divide the browser into multiple windows.
- Each section can load separate HTML document.
- Frameset collection of frame.

7) Two types of Animation?

- 2D Animation
- 3D Animation

8) What is Internet Program?

- A browser is a software program.
- To access the internet and view web page on your computer.
- You can think of your browser as your gateway to the internet.

9) What is Dialler Program?

- Dialler program using the on speed dialler the user can create phone calls manually by typing in the numbers.
- Dialler can also be used to send call.
- Dialler is also used for non-call related actions.

10) What do you mean by ISP?

- ISP stands for Internet Service Provider (ISP).
- The ISP connects to its customer using a data transmission technology.
- For delivering internet protocols packet or frames.
- Such as dial- up connection, cable modem, wireless or high speed interconnections.

11) What do you know about Netscape Navigator?

- The general name for a series of Web Browser.
- Created by Netscape Communication Company.
- Netscape navigator released in 1994.
- First commercial web browser.
- The most used web browser of its time reached 90% of the web user.

12) What do you know about Internet Explorer?

- Internet explorer is a series of graphical web browser.
- Developed by Microsoft.
- Include in the Microsoft windows line of operating system.

- Released in 1995.

4 Mark Questions

1) What do you know about Internet Programs?

- Internet is Worldwide System of Computer Networks
- The Internet is the Global system of interconnected computer networks
- To access the internet and view web page on your computer.
- You can think of your browser as your gateway to the internet.
- Web collection of billions of web pages that you can view with a web browser.
- The most common method of sending and receiving messages in online.

2) What are Frames? Explain it?

- Use of multiple sections on a web presentation.
- Divide the browser into multiple windows.
- Each section can load separate HTML document.
- Frameset collection of frame.
- A frame is digital data transmission unit.
- Computer networking and telecommunication.
- A sequence of bits or symbol those indicate beginning and ending payload.

3) What do you mean by Internet Service Provider (ISP)?

- ISP stands for Internet Service Provider (ISP).
- The ISP connects to its customer using a data transmission technology.
- For delivering internet protocols packet or frames.
- Such as dial- up connection, cable modem, wireless or high speed interconnections.
- A company through which internet access is established.
- Several connections with other servers before reaching the main backbone of the internet.
- It receives a monthly fee from the users for the connectivity mode.

4) State nature of Internet Explorer?

- Internet explorer is a series of graphical web browser.
- Developed by Microsoft.
- Include in the Microsoft windows line of operating system.
- Released in 1995.
- Select any web browser.
- Double click on Google chrome.
- Window will be appearing in screen.

5) Bring out the nature of Netscape Browser?

- The general name for a series of Web Browser.
- Created by Netscape Communication Company.

- Netscape navigator released in 1994.
- First Commercial Web Browser.
- The most used web browser of its time reached 90% of the web user.

7 Mark Questions

1) List out various Animation Techniques?

- Different types of animation as,
 1. Full and limited animation.
 2. Live action animation.
 3. Stop motion animation.
 4. 2D and 3D animation.
 5. Mechanical animation.
 6. Special effects animation.
 7. Rot scoping animation.

2) State the nature of Netscape Browser?

- The general name for a series of Web Browser.
- Created by Netscape Communication Company.
- Netscape navigator released in 1994.
- First Commercial Web Browser.
- The most used web browser of its time reached 90% of the web user.

3) State the Feature of Internet Explorer?

- Connection tab.
- Dialog box's privacy tab.
- Internet options and command.
- ActiveX filtering and lock pop-up.
- Enable private browsing.
- Prevent sites from local accessing the user's physical location.
- Online video
- Unlimited tabs.
- Reading mode.

4) What is Animation? Types of Animation?

Animation

- The world animation is generated from world 'Anime' which means life.
- Animation is the rapid display of a sequence of image of 2D and 3D.
- One of the major images.
- Today most animation is made with computer generated imagery (CGI).

Animation types

1. Traditional animation
2. 2D Animation
3. 3D Animation

4. Stop motion animation

1. **Traditional animation**

- Traditional animation technique in which each frame is drawn by hand.
- The technique was the dominant form of animation in cinema until the advent of computer animation.

2. **2D Animation**

- Animation is a method in which figures are manipulated to appear as moving image.
- Image are drawn or painted by hand on transparent.
- Today most animation is made with computer generated imagery.

3. **3D Animation**

- The differences in appearances between key frames.
- Automatically calculated by the computer.
- In a process twining or morphing.
- Finally the animation is rendered.

4. **Stop motion animation**

- In Stop motion animation is a cinematic process.
- Stop motion animation is when an image is drawn on object.
- Material is used such as a pencil.
- It is moved and drawn very tiny bit.

5. **Flip Book Animation**

- A flip book or flick is a book with a series of pictures.
- Change from one page to next page.
- When pages are turned rapidly.
- The picture appears to animate by simulating motion or some other change.

5) **Draft a note on Security Zones in Internet Explorer?**

- Internet explorer divides your internet world into zones.
- So that you can assign a web sites.
- To a zones with a suitable security level.
- There are four different zones as,
 1. Internet zone
 2. Local intranet zone
 3. Trusted sites zone
 4. Restricted sites zone

1. **Internet zone**

- By default.

- This zone contains anything that is not on your computer or on intranet.
- The Default security level for the internet zone is medium.

2) Local intranet zone

- Contains any addresses that don't require a proxy server.
- As defined by the system administrator.
- These included sites specified on the connection tab.

3) Trusted sites zone

- You can download or run files from damage to your computer.
- The default security level.
- Trust sites zone is low level.

4) Restricted sites zone

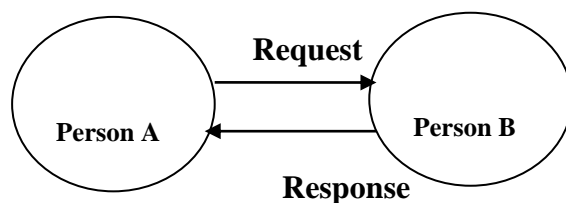
- Site that you're not secure.
- Whether you can download or run files from damage to your computer.
- The default security level.
- Restricted sites zone is high level.

Unit III

2 Mark Questions

1) **Mention the work of Email? Define Email?**

- Email shorts for "Electronic Mail".
- Most widely used feature of the internet along with the web.
- It allows you to send and receive message.
- Email was multiple protocols within the TCP/ IP suits.



2) **What is voice mail?**

- A centralized electronic system.
- This can store message from telephone callers.

3) **What is Net Chatting?**

- Real time process.
- A time transmission of text message from sender and receiver.
- Where messages and voice are sent.
- Responded between parties who are online.

4) What do you mean by ARPANET?

- ARPANET stands for Advanced Research Project Agency Network (ARPANET).
- World first operational networks 1967.
- Department of defence (DOD).
- It was developed to service nuclear attack.

5) What is World Wide Web?

- The World Wide Web (WWW) was born in 1992.
- Www is an information system on the internet.
- This allows documents to be connected to other documents by hyper links.
- To search for information by moving from one document to another.

6) Define Toolbar?

- A toolbar is a set of icons or buttons.
- That is part of a software program's interface or on open window.
- For example as
- Internet explorer
- Include a toolbar in each open window.
- These toolbars have items such as back and forward buttons and home button.

7) Mention the role of the Toolbar?

- A toolbar is a set of icons or buttons.
- That is parts of a software program interface or an open window.
- Toolbar typically sites directly under menu bar.
- For example: web browser, internet explorer etc.

8) What is Voice Mail?

- Method of storing voice message.
- Electronic mode.
- Later retrieval by intended recipients.

4 Mark Questions

1) Explain details of Evolution of internet?

- The concept of Internet was originated in 1969.
- Several technological & Infrastructural changes in internet.
- The original of Internet devised from the concept of **Advanced Research Project Agency Network (ARPANET)**.
- **ARPANET** was developed by United States Department of Defence.

- Basic purpose of ARPANET was to provide communication among the various bodies of government.
- Initially, there were only four nodes, formally called **Hosts**.
- In 1972, the **ARPANET** spread over the globe with 23 nodes located at different countries and thus became known as **Internet**.
- By the time, with invention of new technologies such as TCP/IP protocols, DNS, WWW, browsers, scripting languages etc.,
- Internet provided a medium to publish and access information over the web.

2) Bring out advantage of Email?

- Instant communication.
- Less expensive.
- E- Learning process.
- Access to mail from any place.

3) What is Voice Mail?

- Method of storing voice message.
- Electronic mode.
- Later retrieval by intended recipients.

4) Mention the role of the Toolbar?

- A toolbar is a set of icons or buttons.
- That is parts of a software program interface or an open window.
- Toolbar typically sites directly under menu bar.
- For example: web browser, internet explorer etc.

5) What is Email Creation in Internet?

Creating Email Account

- There are various email service provider available such as
 1. **Gmail**
 2. **Hotmail**
 3. **Ymail**
 4. **rediff mail**
- Here we will learn how to create an account using Gmail.
- Open gmail.com and click **create an account**.
- Now a form will appear.
- Fill your details here and click **Next Step**.



- This step allows you to add your picture.
- If you don't want to upload now, you can do it later.
- Click **Next Step**.
- Now a welcome window appears.
- Click **Continue to Gmail**.
- Wow!! You are done with creating your email account with Gmail.
- It's that easy.
- Now you will see your Gmail account as shown in the following image

6) Mention any Four Browser used in Mobile Phones?

- Android browser.
- Blackberry browser.
- Blazer browser.
- Chrome browser.

7) Draft a note on Internet Protocol?

- A protocol is a set of rules.
- A protocol also defines the formats of data being exchanged.
- Used to describe how devices can communicate.
- That is called protocols.
- Internet protocol is the principal communication protocol.
- Protocol suite for replying datagram's access network boundaries.
- Its rounding function enables internetworking.
- Internet protocol suite for TCP/IP.

7 Mark Questions

1) Different parts of on E-Mail?

Header

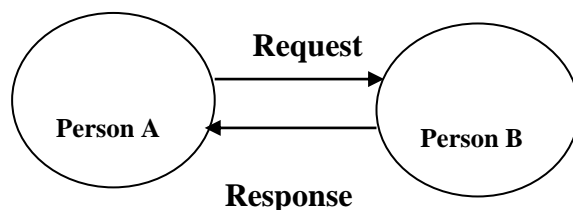
- Recipient's Email address.
- Sender's Email address.
- Carbon copy.
- Blind copy.
- Subject line.

Body

- Main text message.

2) Explain Email and Working in Email?

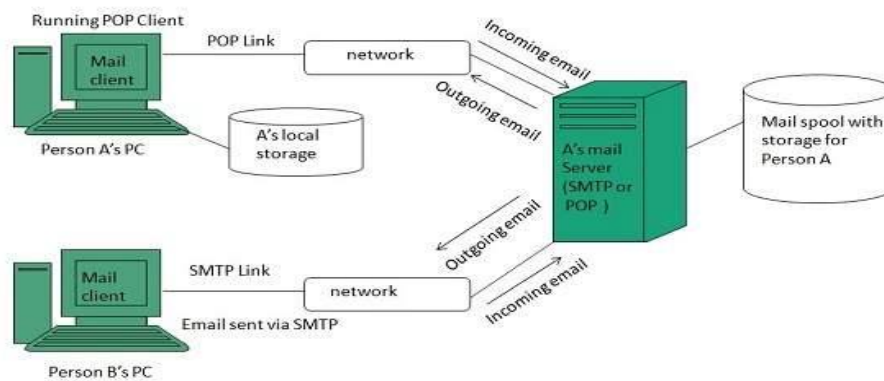
- Email shorts for "Electronic Mail".
- Most widely used feature of the internet along with the web.
- It allows you to send and receive message.
- Email was multiple protocols within the TCP/ IP suits.



Email working

- Email working follows the client server approach.
- In this client is the mailer i.e. the mail application or mail program and server is a device that manages emails.
- Following example will take you through the basic steps involved in sending and receiving emails and will give you a better understanding of working of email system:
 1. Suppose person A wants to send an email message to person B.
 2. Person A composes the messages using a mailer program i.e. mail client and then select Send option.
 3. The message is routed to **Simple Mail Transfer Protocol** to person B's mail server.
 4. The mail server stores the email message on disk in an area designated for person B.

- The disk space area on mail server is called mail spool.
1. Now, suppose person B is running a POP client and knows how to communicate with B's mail server.
 2. It will periodically poll the POP server to check if any new email has arrived for B. As in this case; person B has sent an email for person A, so email is forwarded over the network to B's PC. This message is now stored on person B's PC.
- The following diagram gives pictorial representation of the steps discussed above:



3) Bring out advantage of Email?

- Instant communication.
- Less expensive.
- E- Learning process.
- Access to mail from any place.
- Email is a free tool.
- Email is quick access.
- Email is simple access.
- Email is accessible from anywhere.

4) Explain details of Evolution of internet?

- The concept of Internet was originated in 1969.
- Several technological & Infrastructural changes in internet.
- The original of Internet devised from the concept of **Advanced Research Project Agency Network (ARPANET)**.
- **ARPANET** was developed by United States Department of Defence.
- To provide communication among the various bodies of government.
- Initially, there were only four nodes, formally called **Hosts**.
- In 1972, the **ARPANET** spread over the globe with 23 nodes located at different countries and thus became known as **Internet**.

- By the time, with invention of new technologies.
- Such as TCP/IP protocols, DNS, WWW, browsers, scripting languages etc.,