



BHARATHIDASAN UNIVERSITY
TIRUCHIRAPPALLI-620 024,
Tamilnadu, India

Programme : Bachelor of Physical Education

**Course Title: HEALTH EDUCATION AND
ENVIRONMENTAL STUDIES**

Course Code : 21BPE13

Unit -II

Introduction of Health Education

Dr.R.BALAJI

Guest Lecturer

Department of Physical Education and Yoga

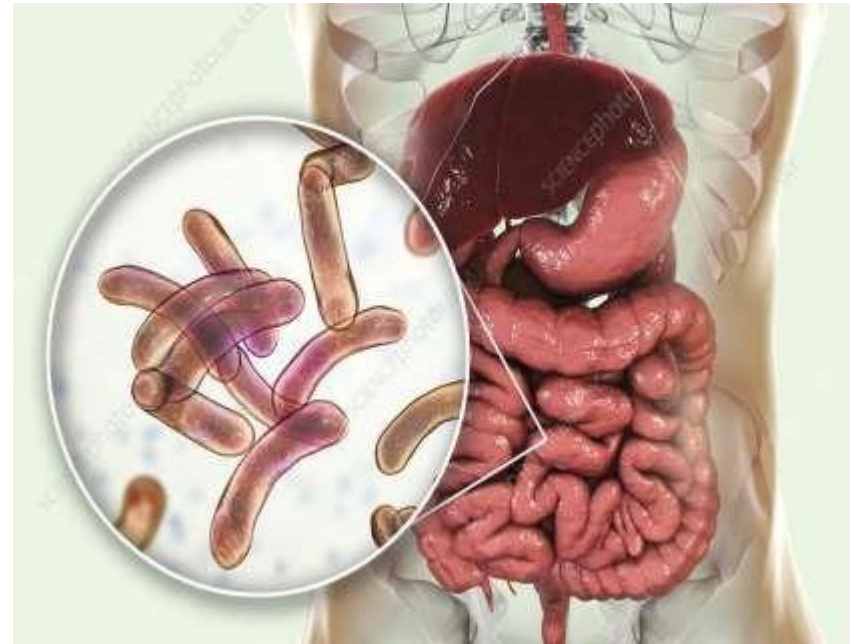
Unit-II Title

Communicable and Non Communicable Diseases.

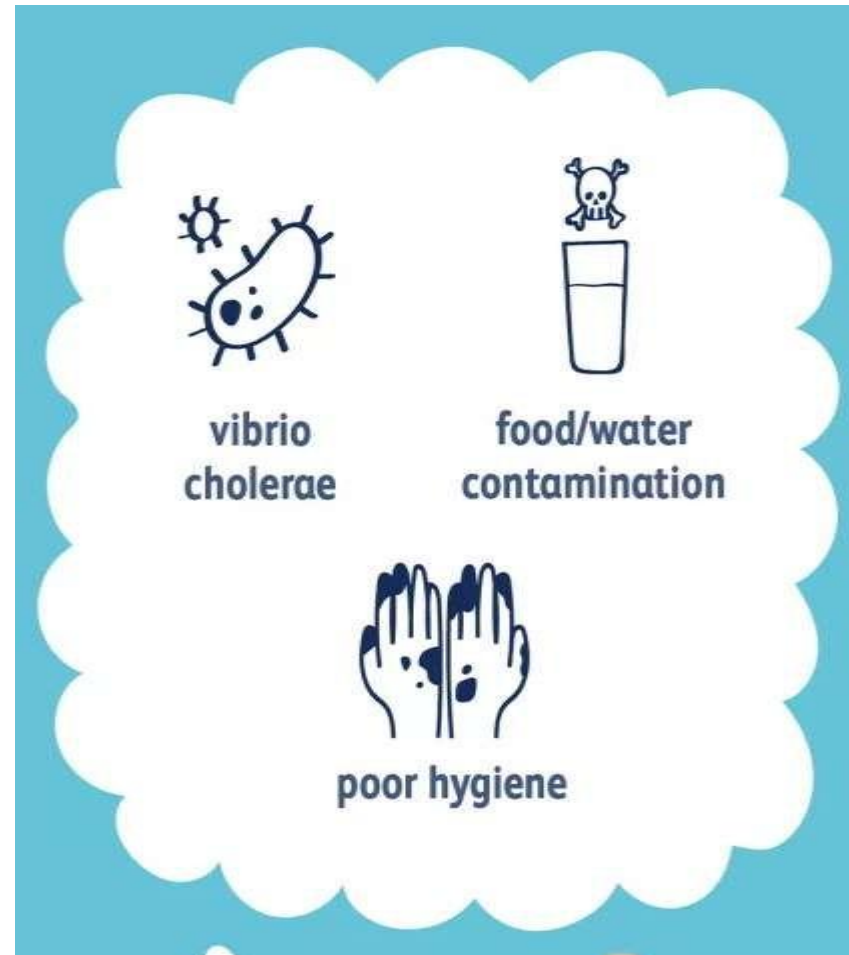


DEFINITION OF CHOLERA

- **Cholera** is a bacterial infection that causes severe watery diarrhea, leading to rapid dehydration and electrolyte imbalances.
- It is often spread through contaminated water or food.



- **Poor sanitation:** Inadequate sanitation practices, such as open defecation and lack of proper sewage systems, can contribute to the spread of cholera.
- It's important to cholera is primarily spread through contaminated water and food, it can also be transmitted through direct contact with an infected person or their bodily fluids.



MALARIA DEFINITION

- ❑ Malaria is a serious infectious disease caused by parasites of the Plasmodium genus, which are transmitted to humans through the bites of infected female Anopheles mosquitoes.
- ❑ Malaria refers specifically to a disease caused by protozoan parasites belonging to the genus **Plasmodium**. There are several species of Plasmodium that infect humans, with **Plasmodium falciparum** and **Plasmodium vivax** being the most common.

