



BHARATHIDASAN UNIVERSITY

Tiruchirappalli- 620 024

Tamil nadu, India

Programme: M.P.Ed., Physical Education & Yoga

Course Title : Sports Technology

Course Code : 21MPE14EB

UNIT-4

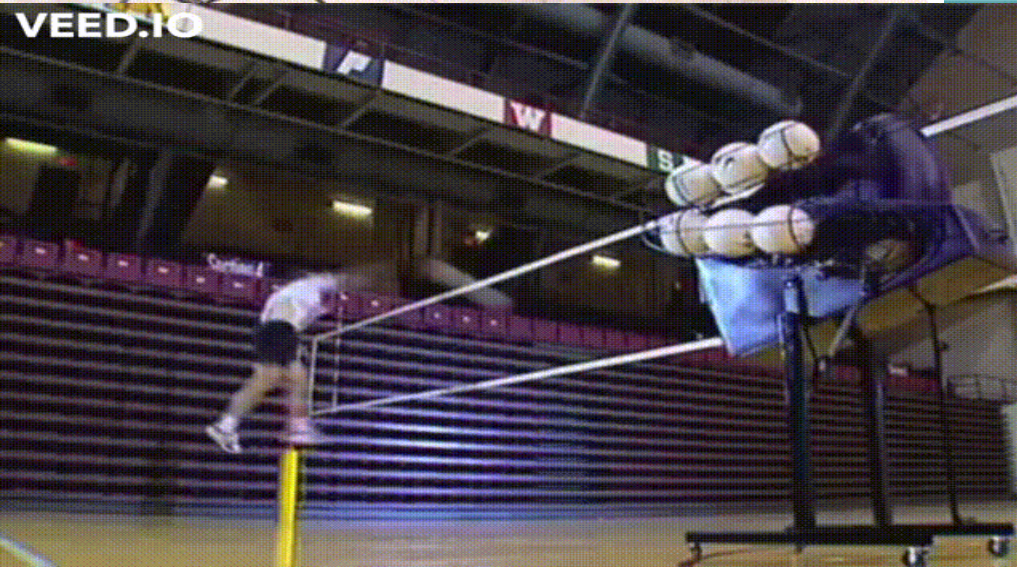
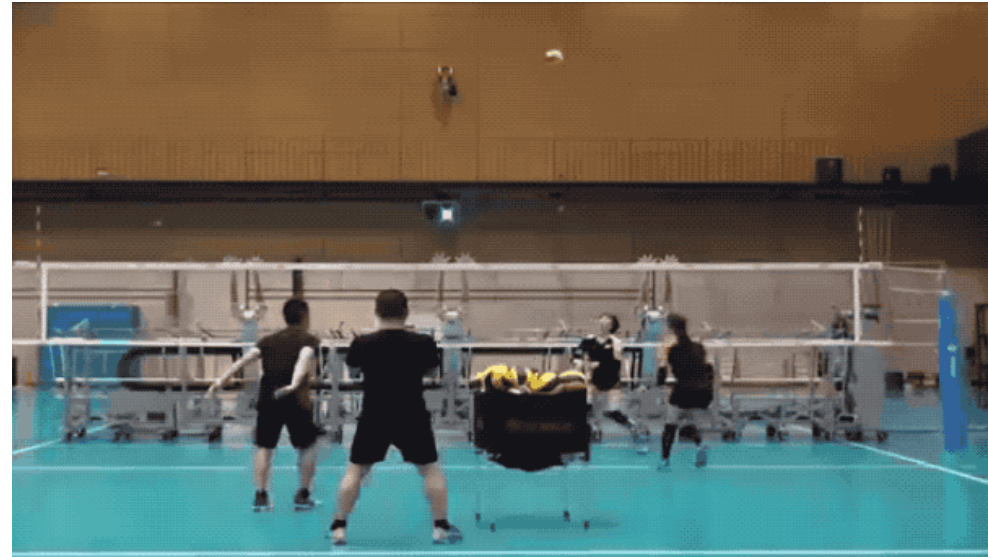
Modern Equipment

Dr.P.SATHEESHKUMAR & E.RAJASEKARAN

Guest Lecturer

Department of Physical Education and Yoga

Modern equipment



PLAYING EQUIPMENT

Playground Equipment means any apparatus which is designed for recreational use in a playground and includes swings, seesaws, stationary spring-mounted animal features, rider- propelled merry-go-rounds, climbers, slides, trampolines and physical fitness devices.

BALL

A round or roundish body, either solid or hollow, of a size and composition suitable for any of various games: football, golf, billiards, etc..

Types of balls

Round balls

- Foot ball
- Hand ball
- Bandy ball
- Base ball
- Basket ball
- Billiard balls
- Bowling ball
- Cricket ball
- Lacrose ball

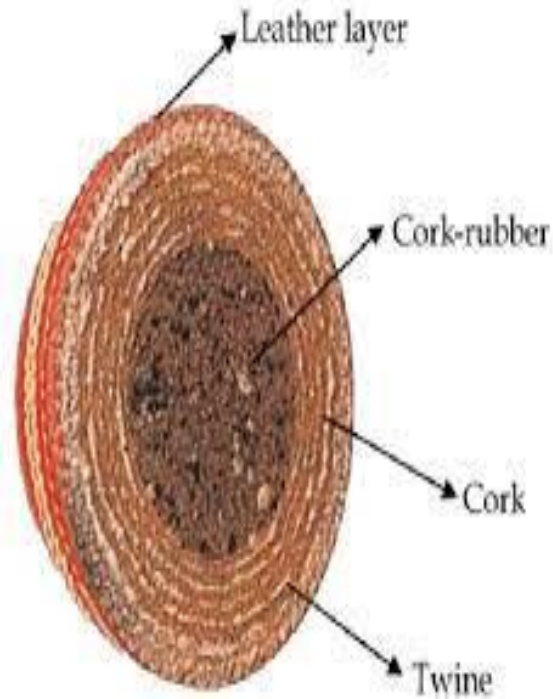
Table tennis ball
Tennis ball
Volley ball
Water polo ball
Super ball

Prolate spheroid balls

American football
Rugby union ball
Canadian Football

Materials

It most common form, a cricket ball is made from layers of twine wound around a cork core, inside a red leather shell. A raised seam of six rows of stitching gives the ball a number of unique aerodynamic qualities, and helps determine its swing, cut and spin.

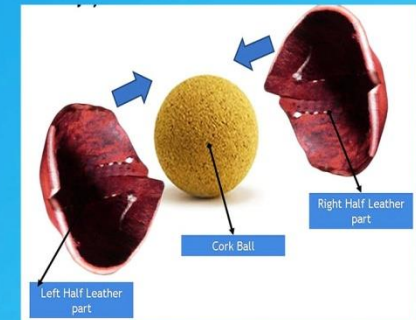


Two piece Cricket Ball



Four piece Cricket Balls

Assembly of stitched leather piece and cork ball



1. English Willow Bat

It is popular because it is the only willow which gives compression and strength to the cricket bat. English willow is basically found in England, it also is known as a *Golden Willow*. (*Virat Kohli, MS Dhoni, Alastair Cook, Steve Smith*)

Use of English Willow Cricket Bat –

It can use the English Willow cricket bat to play with a leather ball. In leather ball, you can play with any types of ball like Pink ball, Red Ball, White Ball.



Kashmir willow is mostly demanded wood in India, which is used for the production of cricket bats. Kashmir willow is not available all over India it's . Kashmir willow bat is different from English willow bats in looks and also in quality as well as.

Kashmir willow bats are due to this we can easily find the difference between Kashmir and English willow. Kashmir willow bat is so this is the main reason behind the price of the bat a bit expensive. Kashmir willow bat is

.

Use of Kashmir Willow Cricket Bat

Willow bat to play with a leather ball. Also, we can play with a tennis ball but mostly this bat is used to play with a leather ball.

- This is the perfect bat for all beginners in cricket.



The softball cricket bat is not used in international cricket it's been only used for gully cricket. This bat is made from soft rubber, & quality wood or fiber. These types of cricket bats are not used by professional cricketers. The price of a softball cricket bat is less than Kashmir willow and English willow.



Carbon Fibre:

Some cricket bat manufacturers insert additional carbon fibre into the handle of the cricket bat to make the bat feel lighter in the hands. The insertion of carbon fibre also allows more power to be generated in shots and increases the shock absorption in the handle from high impact balls. (***Ricky Ponting***)

Titanium:

Due to recent technological advancements and innovations, this material is can be inserted into the handle of cricket bats to add reinforcement and provide more power in the hitting zone.

Types of sticks

There are three categories of hockey sticks to choose from depending on your needs.

- wood hockey sticks
- one-piece composite sticks
- two-piece shaft/blade combos.



RACQUET

A racket, or racquet is a sports implement used for striking a ball or shuttlecock in games such as squash, tennis, racquetball and badminton.

In the strictest sense a racket consists of a handled frame with an open hoop across which a network of strings is stretched tightly. Some rackets may have a solid or perforated hitting surface instead of a network of strings. Such rackets may be called a paddle or bat. Collectively, these games are known as racket sports.

A game for two or four players with ball and racket on a 4-walled court.



- Air Badminton
- Badminton
- Ball badminton
- Basque pelota
- Beach tennis
- Cross Minton
- Frontenis
- Hardball Squash

Types of Racquet

1. **Power Racquet** (longer and head-heavy to supply that extra torque in the swing)
2. **Control Racquet** (a smaller, lighter head for maximum maneuverability)
3. **Tweener Racquet** (provide a good amount of control without being too light.)
4. **Standard Racquet** (heavier standard length racquets,

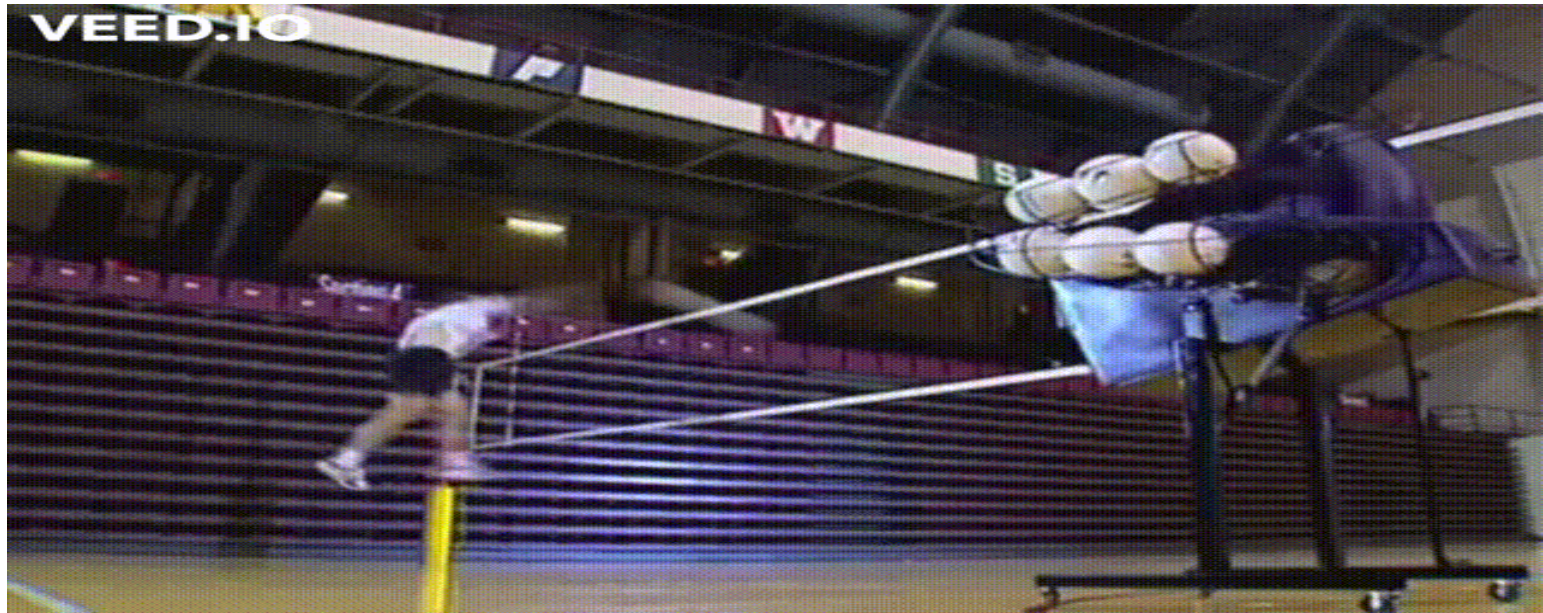
Materials of Racquet

1. **Graphite** (strength and weight)
2. **Steel** (Flexible, tempered steel shaft)
(light in weight, durable, and provide a strong shot)
3. **Aluminum** (more stiffness during

Ball Machine (or) Feeder

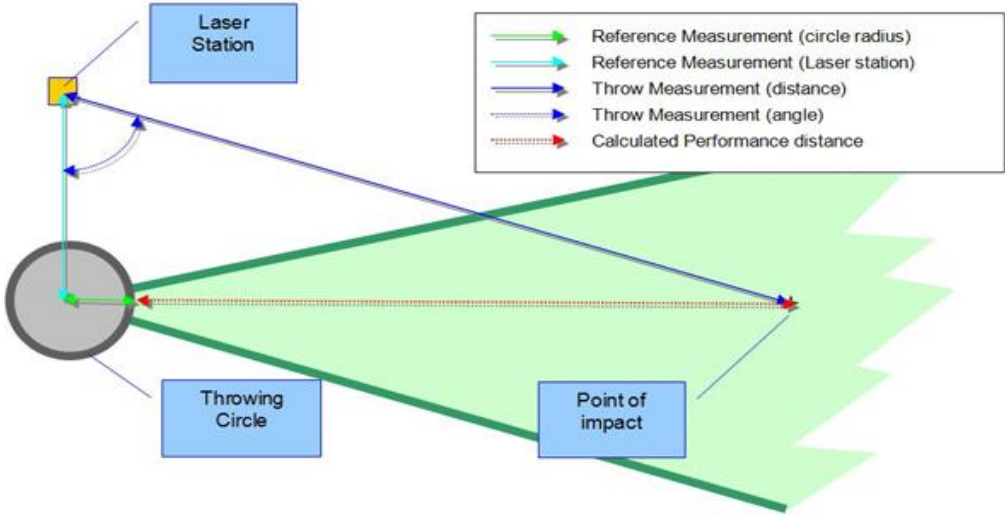
A machine that shoots balls out of a pipe, allowing a player to practice hitting them.

Ball machine is a mechanical device that automatically throws out balls at different speeds and angles.



Measuring Equipment

Laser measuring device produces accurate, computer-generated measurements for field events. These events include Shotput, Javelin, Discus, and Hammer. As well as Long Jump and Triple Jump. It can be combined with event software to integrate laser measurements across the results network.



The starter stands at the start line and gives a countdown through the headset. They then fire the gun which can emit either a gunshot sound or a beep, which is sometimes preferred for athletes with special needs. The Starting Gun then displays a bright flash, as well as the sound from the speaker.



Identi Lynx+ digital race timing video camera is fully integrated with Finish Lynx photo-finish results. In fact, both captures are time-synchronized inside the software. That means users can simply click anywhere in the FinishLynx image capture and watch the full-color IdentiLynx video jump to precisely the same moment in time—but showing a head-on view of the finish line.



The screenshot shows the FinishLynx software interface for a Women 6k (1-1) race. The window title is "FinishLynx - [Women 6k (1-1)]". The interface includes a menu bar (File, Edit, Event, Image, Results, Scoreboard, LapTime, Window, Help) and a toolbar with various icons. Below the toolbar, there are several data sections:

- Reader:** LapTime, Total Laps, Laps/Split, Too Fast Ti, Too Slow
- Start:** 10:30:25.55
- Wind:** 100M (0.0, 10.0)
- LapTime:** 1
- Finish:** Camera 1 (1400, 448, Wide 33%), Camera 2 (30, 512, Wide 50%), Results (6000)
- Results Table:**

Place	Id	Time	Delta Time	Cum. Split Time	Last Split Time	Laps
82	12	22:15.45	0.04	22:15.31	0:51.51	3
83	11	22:16.67	1.22	22:16.62	0:52.30	3
84	15	22:17.31	0.64	22:17.34	0:51.12	3
85	18	22:22.43	5.12	22:22.32	0:52.25	3
86	15	22:24.52	2.09	22:24.45	0:55.04	3
87	15	22:24.52	0.00	22:24.52	0:50.21	3
88	15	22:24.62	0.10	22:24.59	0:59.79	3
89	22	22:24.89	0.27	22:24.82	0:53.18	3
90	24	22:29.01	4.12	22:28.92	0:57.39	3

At the bottom, there are two video playback windows. The left window, labeled "Camera 1", shows a side view of runners crossing the finish line at 22:24:52. The right window, labeled "Camera 2", shows a head-on view of the finish line at 22:24:55. Both windows include playback controls like play, stop, and zoom.



Sports equipment also called sporting goods are the tools, materials, apparel, and gear used to compete in a sport and varies depending on the sport.

The equipment ranges from balls, nets, and protective gear like helmets. Sporting equipment can be used as protective gear or a tool used to help the athletes play the sport.