

# Nanophysics - unit 1

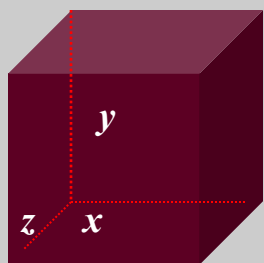
**Dr. K. Jeganathan**

Department of Physics  
Bharathidasan University  
Tiruchirappalli - 24

**22PH324A PHYSICS OF NANOMATERIALS AND APPLICATIONS**

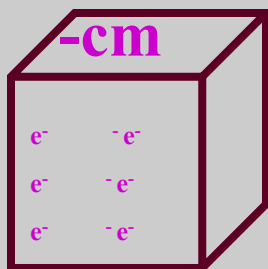
- Definition and Examples
- Physical Properties
  - Size
  - Crystal Structure
  - Melting Point
  - Mechanical Strength
- Optical Properties
  - Surface Plasmons
  - Quantum Confinement Effects
- Electrical Properties

# Comparison of typical dimension

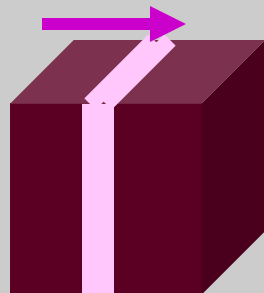


**3D**  
**Atom**

*-Bulk crystals (cm)*

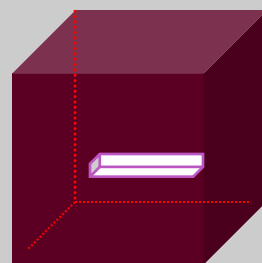
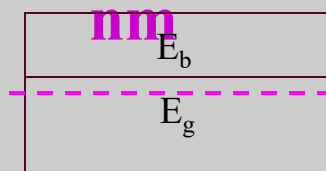


$e^-$  free to move (K.E = 0)



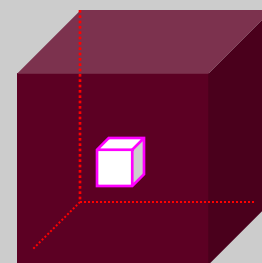
**2D**

2DEGs -Q Well(nm)



**1D**

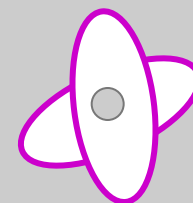
Quantum wire



**0D (3D)**

Quantum Dot

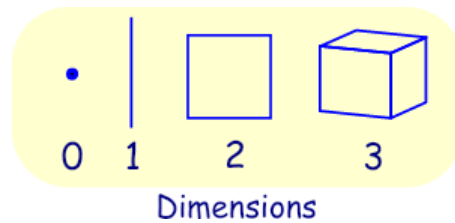
nm



Å

$$\text{de Broglie } \lambda = h/p = h/\sqrt{3m_{\text{eff}}kT}$$

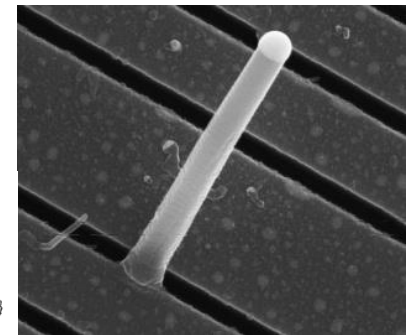
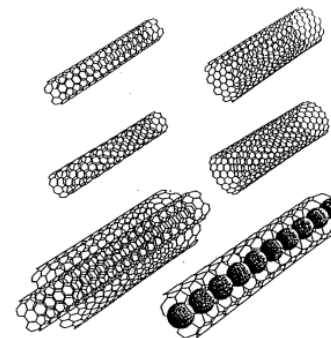
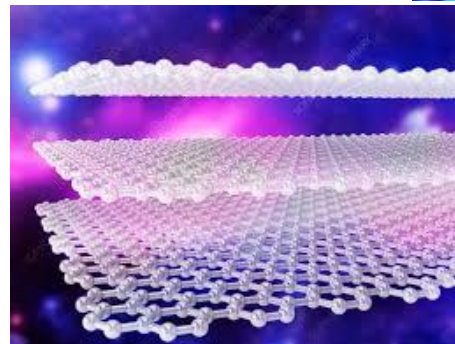
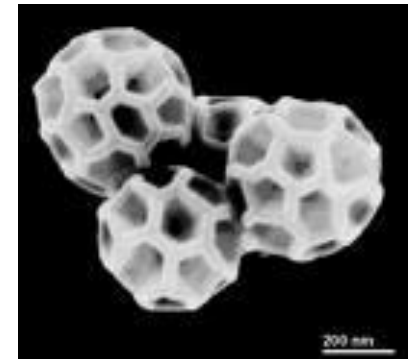
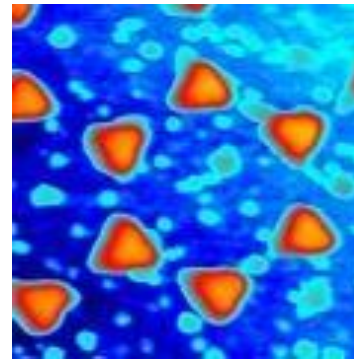
# Definition of Nanoparticle

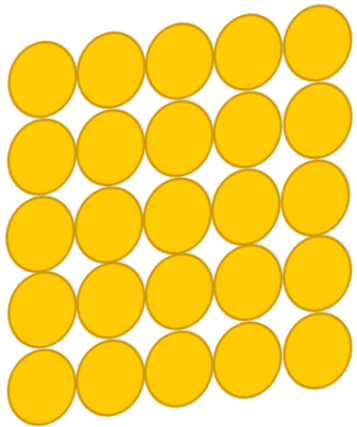


• A structure with at least any one of the dimension less than 1 ~ 100 nm.

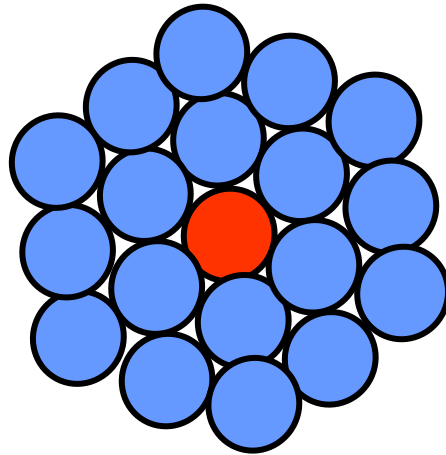
• Examples:

- **Sphere-like particles (0D)**
  - Ag nanoparticles, buckyballs
- **Sheet-like NS (2D)**
  - Thin films; Graphene
- **Rod-like NS (1D)**
  - Si & Ni nanowires
- **Tube-like NS**
  - Carbon nanotubes
  - TiO<sub>2</sub> nanotubes

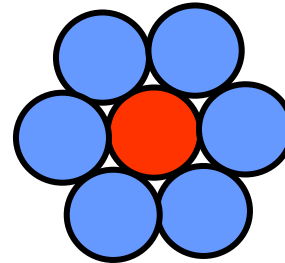




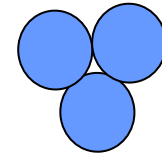
mm



100 nm



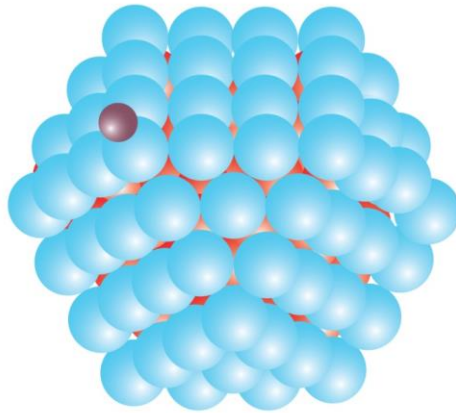
10 nm



5 nm



1 nm



# Surface atoms have Higher energy!

$$E_{\text{(surface atoms)}} - E_{\text{(interior atoms)}} = E_{\text{(surface)}}$$

## Surface Energy!

# Unique Characteristics of Nanoparticles

- Large surface to volume ratio
- High percentage of atoms/molecules on the surface
- Surface forces are very important, while bulk forces are not as important.
- Metal nanoparticles have unique light scattering properties and exhibit **plasmon resonance**.
- Semiconductor nanoparticles may exhibit confined energy states in their electronic band structure (e.g., quantum dots) : **Quantisation**
- Unique chemical and physical properties
- Exhibit same size scale as many biological structures



# Examples of Unusual Properties

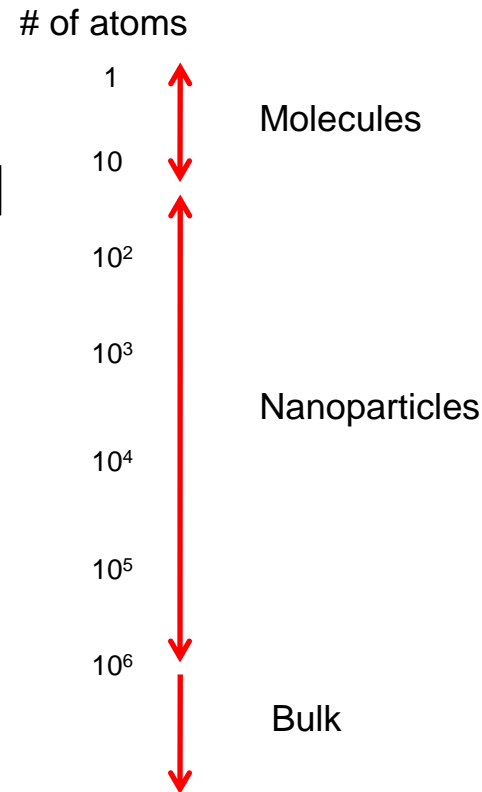
- Lowered phase transition temperatures
- Increased mechanical strength !!?? How?
- Different optical properties
- Altered electrical conductivity
- Magnetic properties
- Self-purification and self-perfection / self-assembled

# Physical Properties of Nanoparticles

- Physical properties of nanoparticles are dependent on:
  - Size
  - Shape (spheres, rods, platelets, etc.)
  - Composition
  - Crystal Structure (FCC, BCC, etc.)
  - Surface ligands or capping agents
  - The medium in which they are dispersed

# Size

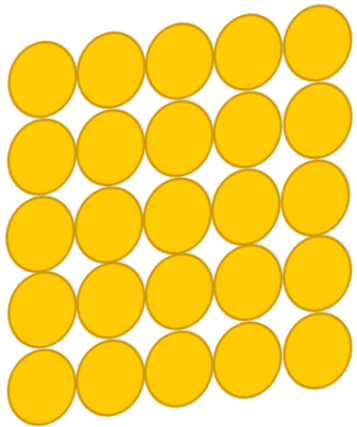
- Molecules, nanoparticles, and bulk materials can be distinguished by the number of atoms comprising each type of material.



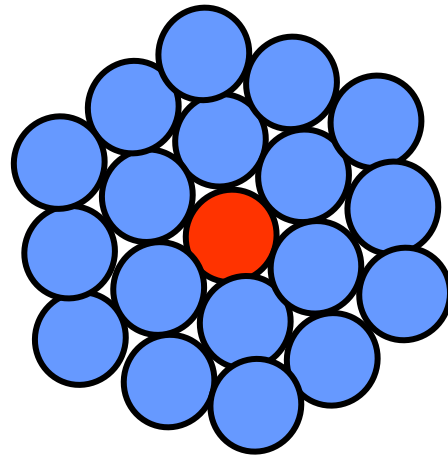
Poole, C., Owens, F. *Introduction to Nanotechnology*. Wiley, New Jersey, 2003

# Size

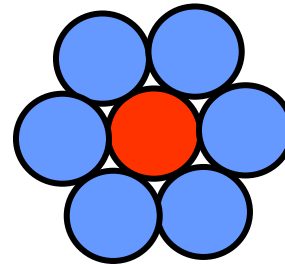
- Nanoparticles exhibit unique properties due to their high surface area to volume ratio.
- A spherical particle has a diameter ( $D$ ) of 100nm.
  - Calculate the volume ( $V$ ) and surface area ( $SA$ )



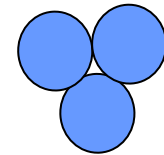
mm



100 nm



10 nm



5 nm



1 nm

# Size

- Nanoparticles exhibit unique properties due to their high surface area to volume ratio.
- A spherical particle has a diameter ( $D$ ) of 100nm.
  - Calculate the volume ( $V$ ) and surface area ( $SA$ )  
(Work out!)

# Size

- Nanoparticles exhibit unique properties due to their high surface area to volume ratio.
- A spherical particle has a diameter (D) of 100nm.
  - Calculate the volume (V) and surface area (SA)

$$V = \frac{4}{3} \pi r^3 = \frac{\pi D^3}{6}$$

$$V = \frac{\pi(100 \times 10^{-9})^3}{6}$$

$$V = 5.24 \times 10^{-22} \text{m}^3$$

$$SA = 4\pi r^2 = \pi D^2$$

$$SA = \pi(100 \times 10^{-9})^2$$

$$SA = 3.141 \times 10^{-14} \text{m}^2$$

Calculate SA and V for 10 nm, 1 nm spherical NPs  
Find out SA/V ratio = ??

# Surface Area : Volume Ratio

- This gives an approximate surface area to volume ratio of  $>10^7:1$  which is significantly larger than a macro sized particle.
- As the surface area to volume ratio increases so does the percentage of atoms at the surface and surface forces become more dominant.
- Generally accepted material properties are derived from the bulk, where the percentage of atoms at the surface is miniscule. These properties change at the nanoscale.

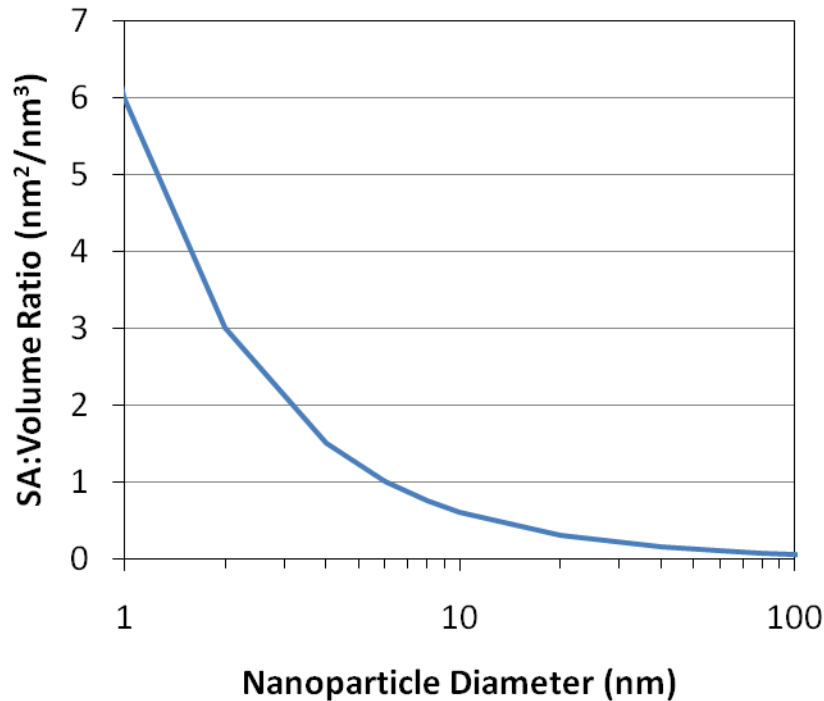


# Size

Some example calculations for volume and surface area of nanoparticles.  
These calculations use nm as unit of length.

Nanoparticle Diameter (nm)	Nanoparticle Diameter ( $\mu\text{m}$ )	Volume ( $\text{nm}^3$ )	Surface Area ( $\text{nm}^2$ )	SA:Vol Ratio ( $\text{nm}^2/\text{nm}^3$ )
<b>1</b>	<b>0.001</b>	<b>0.524</b>	<b>3.14</b>	<b>6</b>
10	0.01	524	314	0.6
100	0.1	523598	31416	0.06
<b>1000</b>	<b>1</b>	<b>5.24E+08</b>	<b>3.14E+06</b>	<b>0.006</b>
10000	10	5.24E+11	3.14E+08	0.0006
100000	100	5.24E+14	3.14E+10	0.00006
1000000	1000	5.24E+17	3.14E+12	0.000006

# Surface Area:Volume Ratio



In this graph:

$$\text{SA} = \text{nm}^2$$

$$\text{Vol} = \text{nm}^3$$

$$\text{SA:Vol Ratio} = \text{nm}^2/\text{nm}^3$$

The ratio increases dramatically when the nanoparticle diameter drops below about 100 nm

# Size is a Material Property?



## What we know about Au?:

Material properties don't change with size

- resistivity
- melting point
- optical absorption

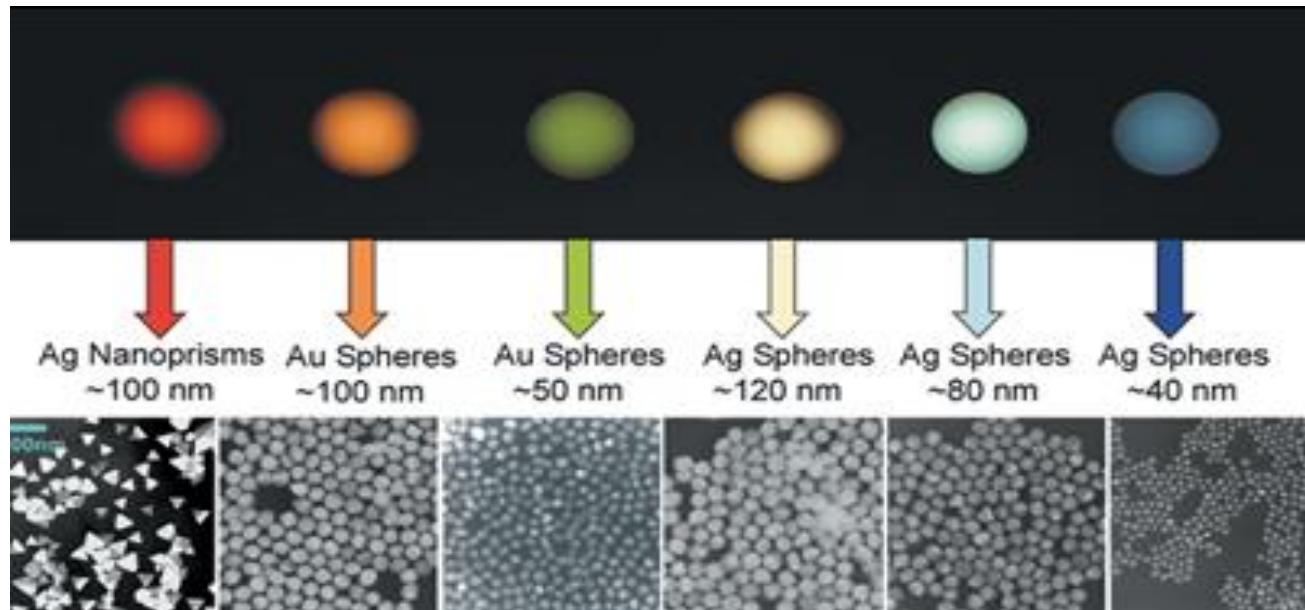


## The Nano gold exhibits :

Material properties (such as optical Absorption, shown here) change with the size of the gold nanoparticle.

# Size

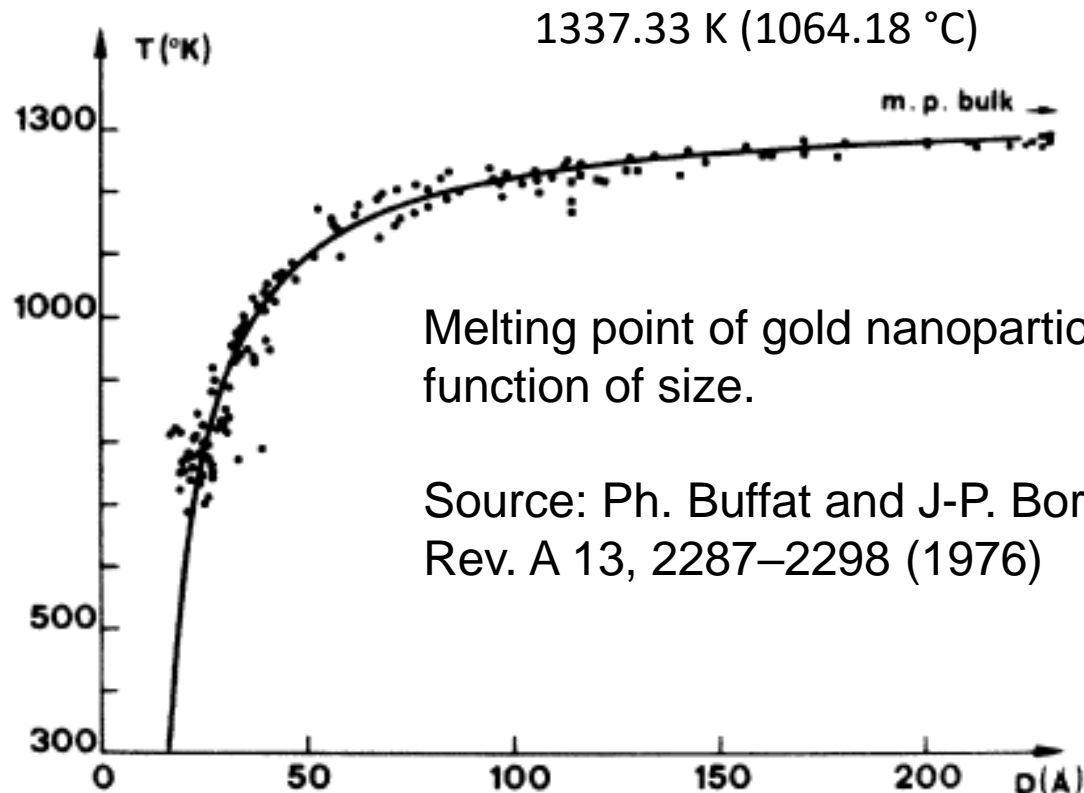
- As the percentage of atoms at the surface increases, the mechanical, optical, electrical, chemical, and magnetic properties change.
  - For example optical properties (color) of gold and silver change, when the spatial dimensions are reduced and the concentration is changed.



# Size

## Melting point as a function of particle size

- Nanoparticles have a lower melting point than their bulk counterparts



# m.p versus Shape/Size

- Particles: May sinter together at lower than expected temperature.
- Rods: Can melt and form spherical droplets if heated too high.
- Films: Thin films can form pin-holes. Continued heating can lead to de-wetting behavior and island formation.

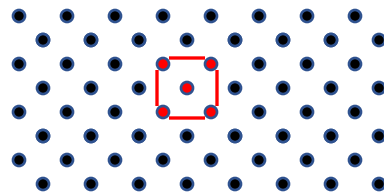
# Crystal Structure

- Most solids are crystalline with their atoms arranged in a regular manner.
- This arrangement of atoms impacts the functionality of the material.
- Some solids have this order presented over a long range as in a crystal.
- Amorphous materials such as glass and wax lack long range order, but they can have a limited short range order, defined as the local environment that each atom experiences.

Poole, C., Owens, F. *Introduction to Nanotechnology*. Wiley, New Jersey. 2003

# Crystal Structure

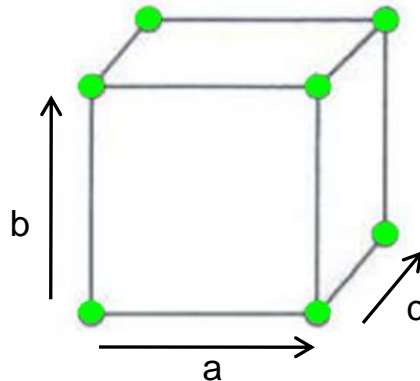
- The spatial arrangement of atoms in a crystal lattice is described by its unit cell.
- The unit cell is the smallest possible volume that displays the full symmetry of the crystal.
- Many materials have a “preferred” unit cell.





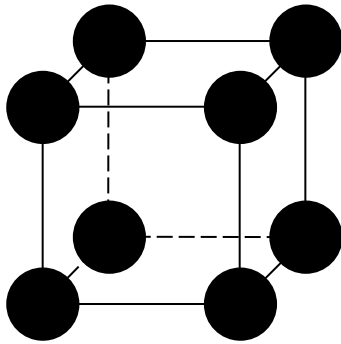
# Crystal Structure

- In 3 dimensions, unit cells are defined by 3 lattice constants and 3 angles.
- This leads to 14 Bravais lattices, each having characteristic restrictions on the lattice constants, angles, and centering of atoms in the unit cell.

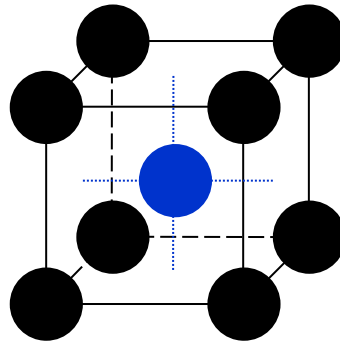


# Crystal Structures

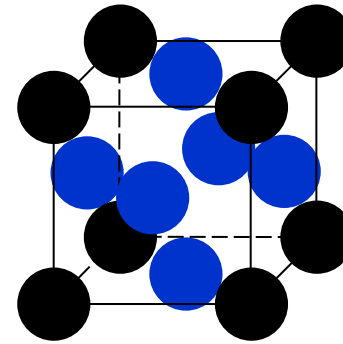
For cubic unit cells, there are three centering types:



Simple Cubic  
(SC)



Body Centered Cubic  
(BCC)



Face Centered Cubic  
(FCC)






## Size & Crystal Structure

- Most metals in the solid form close packed lattices
- Ag, Al, Cu, Co, Pb, Pt, Rh are Face Centered Cubic (FCC)
- Mg, Nd, Os, Re, Ru, Y, Zn are Hexagonal Close Packed (HCP)
- Cr, Li, Sr can form Body Centered Cubic (BCC) as well as (FCC) and (HCP) depending upon formation energy

# Size & Crystal Structure

- How does crystal structure impact nanoparticles?
- Nanoparticles have a “**structural magic number**”, that is, the optimum number of atoms that leads to a stable configuration while maintaining a specific structure.
- Structural magic number = minimum volume and maximum density configuration
- If the crystal structure is known, then the number of atoms per particle can be calculated.

# Close-Packed Magic Number Clusters

Full-shell "magic number" clusters					
Number of shells	1	2	3	4	5
Number of atoms in cluster	13	55	147	309	561
Percentage of surface atoms	92	76	63	52	45

- Magic Number = Cluster has a complete, regular outer geometry
- Formed by successively packing layers around a single metal atom.
- Number of atoms ( $y$ ) in shell ( $n$ ):  $y = 10n^2 + 2$  ( $n = 1, 2, 3, \dots$ )
- Maximum number of nearest neighbors (metal-metal hcp packing)
- Decreasing percentage of surface atoms as cluster grows

J. D. Aiken III, R. G. Finke, *J. Mol. Catal.* 1999, 145, 1

## Size & Crystal Structure

- For  $n$  layers, the number of atoms  $N$  in an approximately spherical FCC nanoparticle is given by the following formula:

$$N = 1/3[10n^3 - 15n^2 + 11n - 3]$$

- The number of atoms on the surface  $N_{surf}$

$$N_{surf} = 10n^2 - 20n + 12$$

# Size & Crystal Structure

Number of atoms (structural magic numbers) in rare gas or metallic nanoparticles with face-centered cubic close-packed structure<sup>a</sup>

Shell Number	Diameter	Number of FCC Nanoparticle Atoms		
		Total	On Surface	% Surface
1	1 <i>d</i>	1	1	100
2	3 <i>d</i>	13	12	92.3
3	5 <i>d</i>	55	42	76.4
4	7 <i>d</i>	147	92	62.6
5	9 <i>d</i>	309	162	52.4
6	11 <i>d</i>	561	252	44.9
7	13 <i>d</i>	923	362	39.2
8	15 <i>d</i>	1415	492	34.8
→ 9	17 <i>d</i>	2057	642	31.2
10	19 <i>d</i>	2869	812	28.3
11	21 <i>d</i>	3871	1002	25.9
12	23 <i>d</i>	5083	1212	23.8
25	49 <i>d</i>	4.90 × 10 <sup>4</sup>	5.76 × 10 <sup>3</sup>	11.7
50	99 <i>d</i>	4.04 × 10 <sup>5</sup>	2.40 × 10 <sup>4</sup>	5.9
75	149 <i>d</i>	1.38 × 10 <sup>6</sup>	5.48 × 10 <sup>4</sup>	4.0
100	199 <i>d</i>	3.28 × 10 <sup>6</sup>	9.80 × 10 <sup>4</sup>	3.0

<sup>a</sup>The diameters *d* in nanometers for some representative FCC atoms are Al 0.286, Ar 0.376, Au 0.288, Cu 0.256, Fe 0.248, Kr 0.400, Pb 0.350, and Pd 0.275.

## Example Calculations:

How many atoms (N) are in idealized Au NP's with the following diameters?

### 5 nm Au NP:

With 9 shells,  $n = 9$  and  
 NP diameter =  $17d = 4.896$  nm  
 $N = 1/3[10n^3 - 15n^2 + 11n - 3]$   
 $N = 2057$

### Other Approximate Values

10 nm = 17,900  
 20 nm = 137,000  
 30 nm = 482,000  
 40 nm = 1.1 million  
 50 nm = 2.2 million

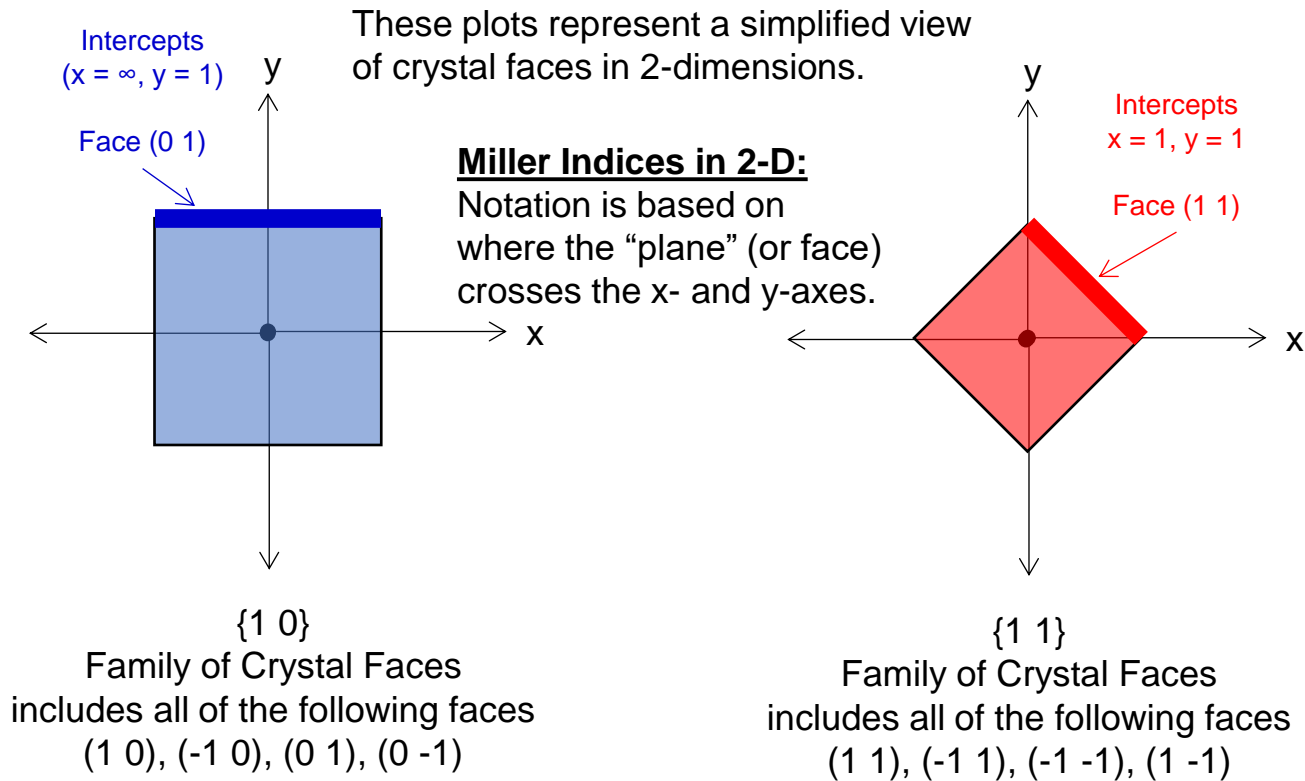
, C., Owens, F. *Introduction to Nanotechnology*. Wiley, New Jersey. 2003

# Wulff Crystal Shapes

- Used to determine the shape of a crystal when formed under thermodynamic equilibrium conditions.
- Surfaces = areas of high energy
- Different facets have different surface energies.
- Objective is to minimize the total surface energy of the xtal.

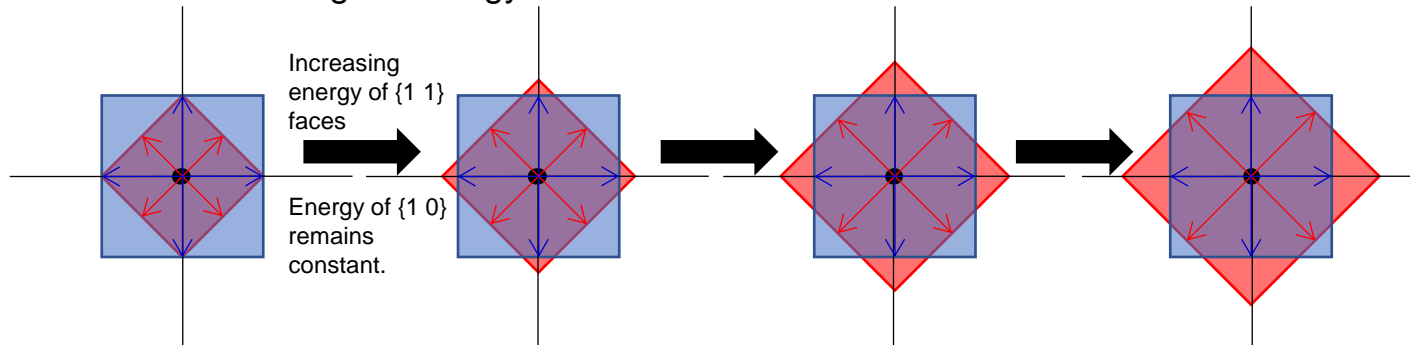


# Wulff Crystal Shapes

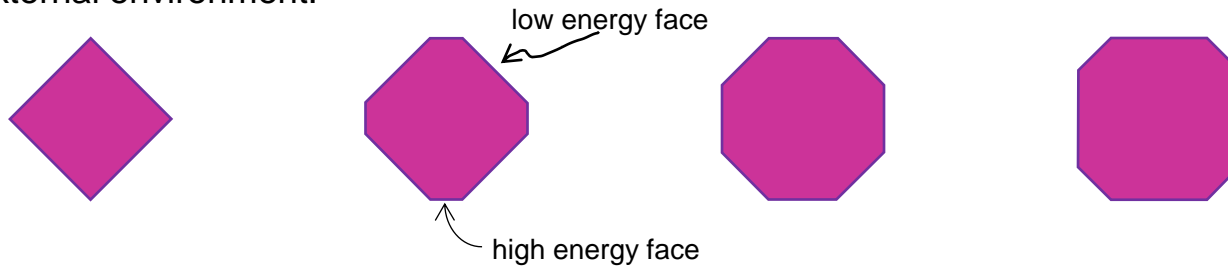


# Wulff Crystal Shapes

Wulff Plots: Length of arrow is proportional to surface energy of that face. Longer arrows denote higher energy surfaces.



Crystal Shapes: Draw outline of inner-most facets to determine shape of the crystal. The result is that high energy faces expose less surface area to the external environment.

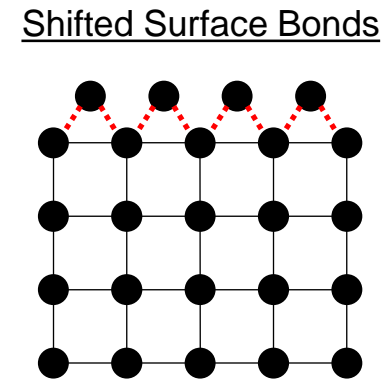
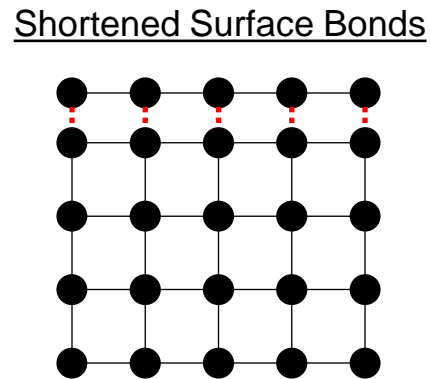
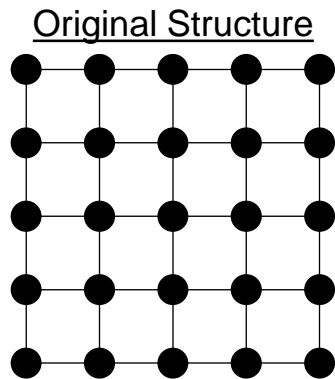


# Deviations from Ideal Crystals

- Often, nanoparticles (nanocrystals) do not form well-defined crystal facets.
- The Wulff crystal shapes are idealized cases where the crystal surface energies determine the shape (thermodynamic control).
- Kinetic factors often play a major role in crystal growth. This explains why different processing conditions can lead to different morphologies for the same material.
- Roughening Temperature: Above this temperature, surface atoms on a growing crystal have increased mobility (liquid-like surface) and well-defined facets do not form.
- At elevated temps, all faces tend to have similar energy (e.g., on macroscale consider the C-Z process for Si).

# Altered Lattice Constants

- Compare lattice structure of nano and bulk materials
- Shortening of bonds near the surface
- Surface reconstruction








# Surface atoms have Higher energy!

$$E_{\text{(surface atoms)}} - E_{\text{(interior atoms)}} = E_{\text{(surface)}}$$

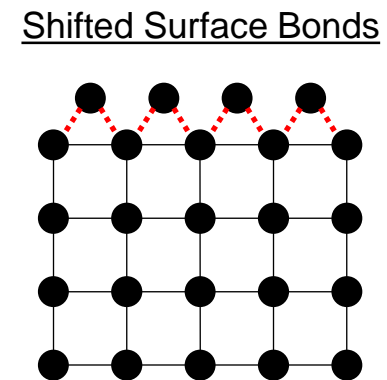
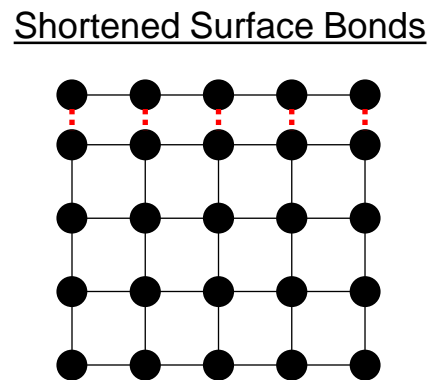
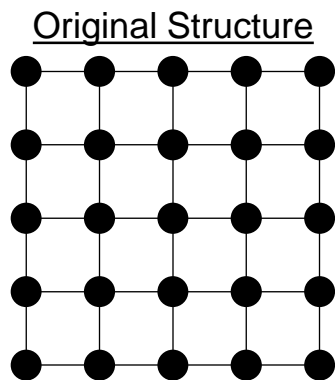
## Surface Energy!

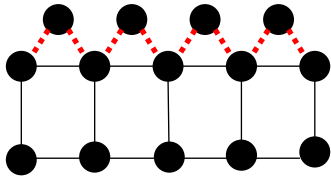
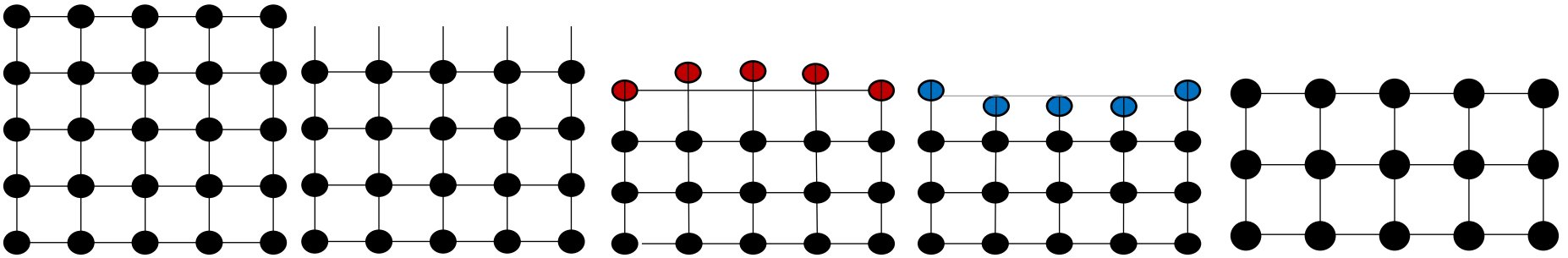
# recap

Full-shell "magic number" clusters					
Number of shells	1	2	3	4	5
Number of atoms in cluster	13	55	147	309	561
Percentage of surface atoms	92	76	63	52	45

# Altered Lattice Constants

- Compare lattice structure of nano and bulk materials
- Shortening of bonds near the surface
- Surface reconstruction







- Optical Properties
  - Surface Plasmons
  - Quantum Confinement

# Optical Properties

- The size dependence on the optical properties of nanoparticles is the result of two distinct phenomena:
  - Surface plasmon resonance for metals
  - Increased energy level spacing due to the confinement of delocalized energy states. Mostly occur in semiconductors

# Optical Properties

- Surface Plasmons

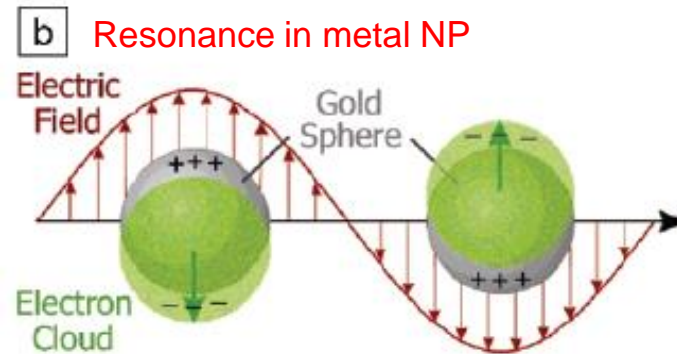
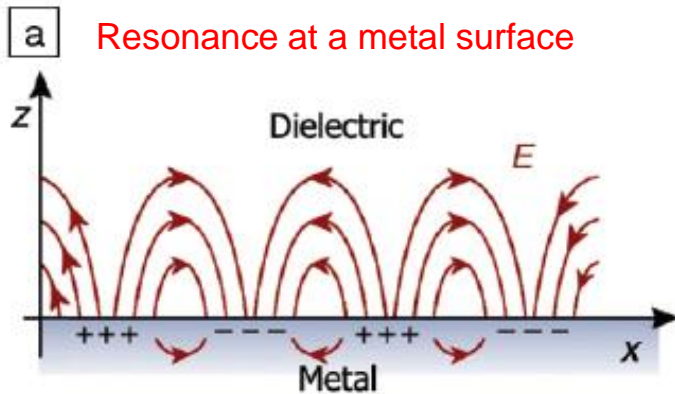
- Recall that metals can be modeled as an arrangement of positive ions surrounded by a sea of *free electrons*.
- The sea of electrons behaves like a fluid and will move under the influence of an electric field



# Optical Properties

## Surface Plasmons

- If the electric field is oscillating (like a photon), then the sea of electrons will oscillate too. These oscillations are quantized and resonate at a specific frequency. Such oscillations are called **plasmons**.



Source: MRS Bulletin 2005, 30(5), 338.

# Optical Properties

- Surface Plasmons

- Formal definition: Plasmons are the coherent excitation of *free electrons* in a metal.
- The plasmon resonance frequency ( $f$ ) depends on particle size, shape, and material type. It is related to the plasmon energy ( $E$ ) by Planck's constant.  $E=h*f$
- Surface plasmons are confined to the surface of the material.
- The optical properties of metal nanoparticles are dominated by the interaction of surface plasmons with incident photons.

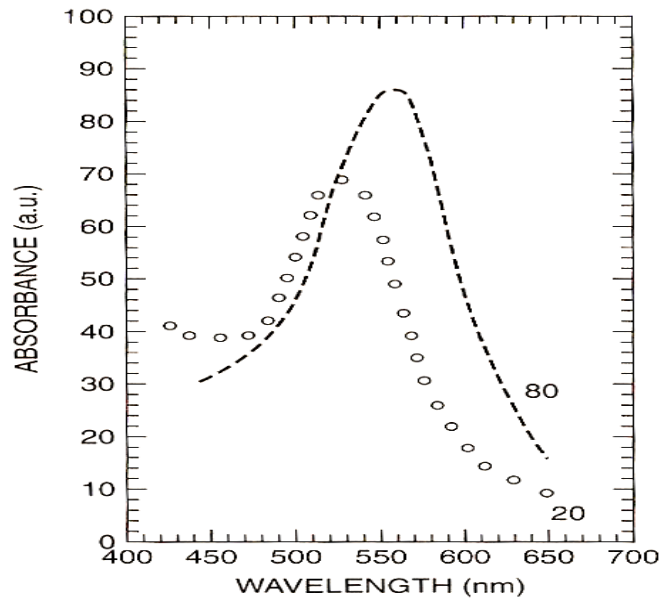
# Optical Properties

## Surface Plasmons

- Metal nanoparticles like gold and silver have plasmon frequencies in the visible range.
- When white light impinges on metal nanoparticles the wavelength corresponding to the plasmon frequency is absorbed.
- The spectral locations, strengths, and number of plasmon resonances for a given particle depend on the particle's shape and size.

# Optical Properties

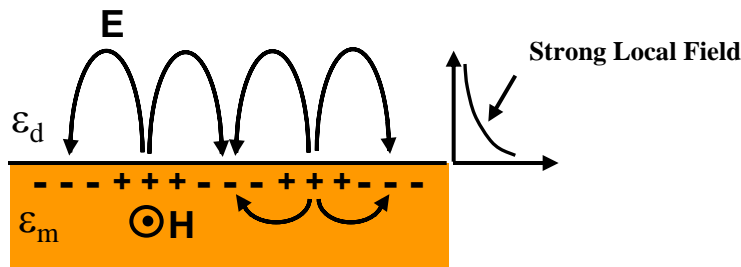
- Absorption spectra of spherical Au nanoparticles



Optical absorption spectrum of 20- and 80-nm gold nanoparticles embedded in glass.  
[Adapted from F. Gonella et al., in *Handbook of Nanostructured Material and Nanotechnology*,  
H. S. Nalwa, ed., Academic Press, San Diego, 2000, Vol. 4, Chapter 2, p.85.]

# Surface Plasmon Resonance (SPR) and Localized SPR (LSPR) in Metallic Nanostructures

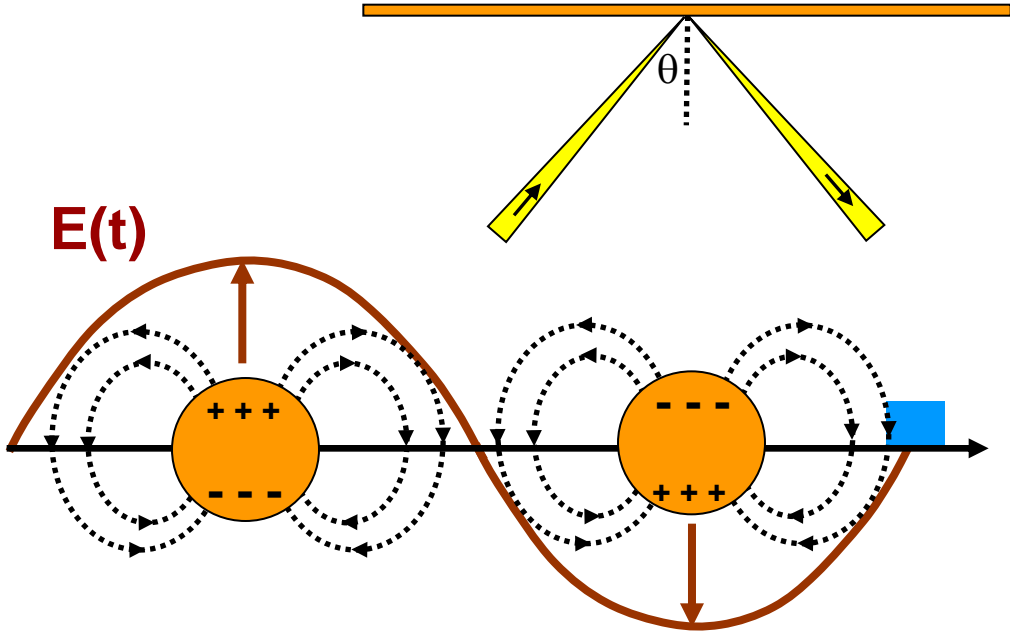
**Plasmon: Quantized charge density wave in free electron gas.**



**SPR: Surface plasmons confined to metal/dielectric interface.**

**Wave vectors**

$$k_{sp} = k \left( \frac{\epsilon_m \epsilon_d}{\epsilon_m + \epsilon_d} \right)^{1/2} = \frac{\omega}{c} \sqrt{\epsilon_d} \sin(\theta)$$

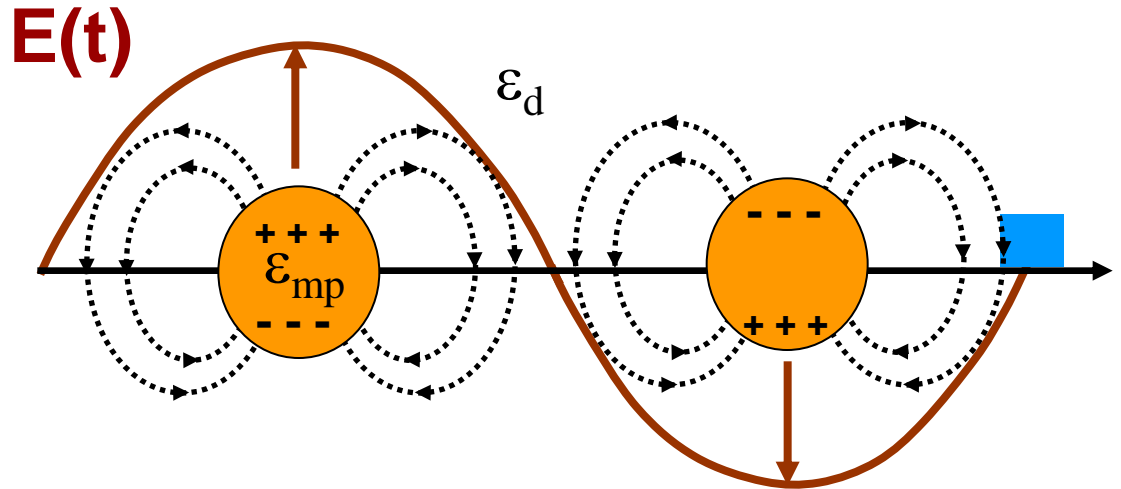


**LSPR: Resonant scattering modes in sub-wavelength metallic nanoparticles**



# Local Field Enhancement Metallic Nanoparticles

$$\mathbf{P}(\mathbf{t}) = \alpha \mathbf{E}(\mathbf{t})$$



$$\alpha = 4\pi\epsilon_0\epsilon_d R_p^3 \frac{\epsilon_{mp}(\omega) - \epsilon_d}{\epsilon_{mp}(\omega) + 2\epsilon_d}$$

$$\text{Re}[\epsilon_{mp}(\omega)] = -2\epsilon_d(\omega) \quad \longrightarrow$$

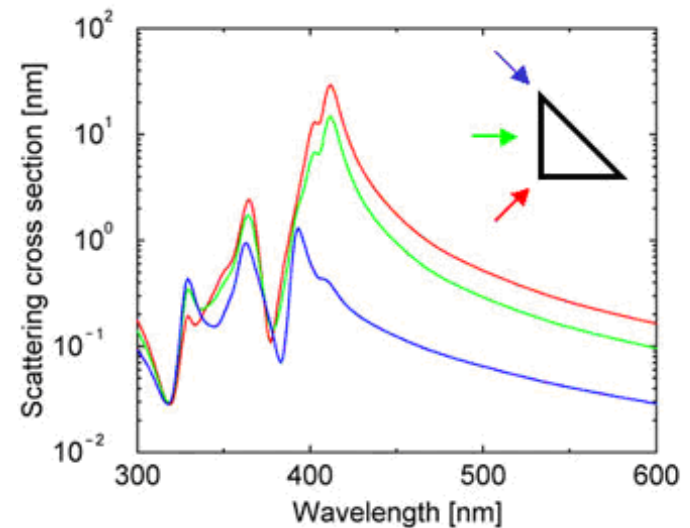
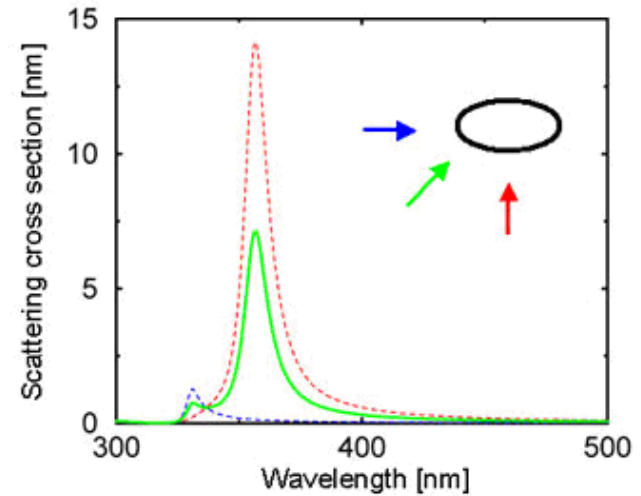
**Optical Absorption - Scattering  
Local Field Enhancement**

**Absorption frequency/bandwidth depend on particle size, shape, composition and surrounding media etc.**

# Optical Properties

## Surface Plasmons: Shape dependence of absorption spectra

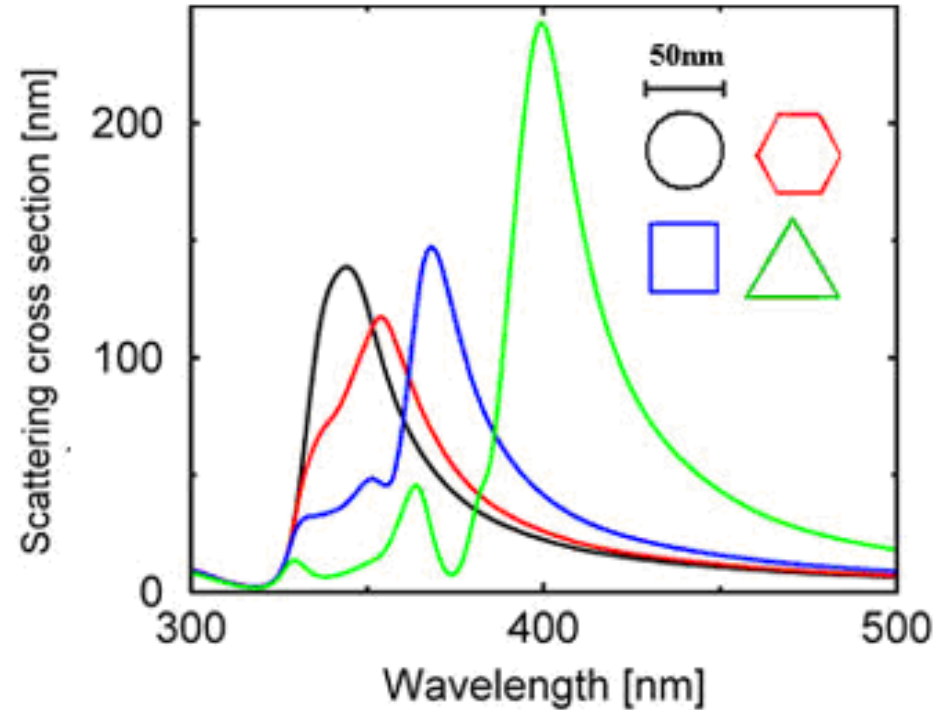
- The amount of light that is scattered into the far field is described by the scattering cross section (SCS). The SCS is plotted against the wavelength of light used to illuminate a particle from a specific angle.
- The arrows indicate the illumination angle, and their colors correspond to the different plot lines.



# Optical Properties

Surface Plasmons: Shape dependence of absorption spectra

- Triangular shaped nanoparticles produce plasmons with altered frequency and magnitude



Martin, Olivier J.F. "Plasmons". *Plasmons*. 22 Mar. 2006. Ecole Polytechnique Fédérale de Lausanne. 26 Jan. 2003.

**The Lycurgus Cup (glass; British Museum; 4<sup>th</sup> century A. D.)**



When illuminated from outside, it appears green. However, when illuminated from within the cup, it glows red..



## Lycurgus Cup illuminated from within



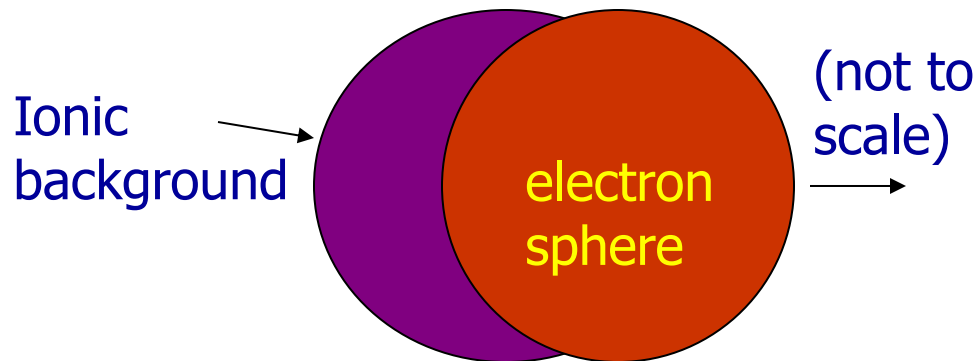
When illuminated from within, the Lycurgus cup glows red. The red color is due to tiny gold particles embedded in the glass, which have an absorption peak at around 520 nm

<https://www.youtube.com/watch?v=v7jzHttcTG4>



## What is the origin of the color? Answer: “surface plasmons” - **SP**

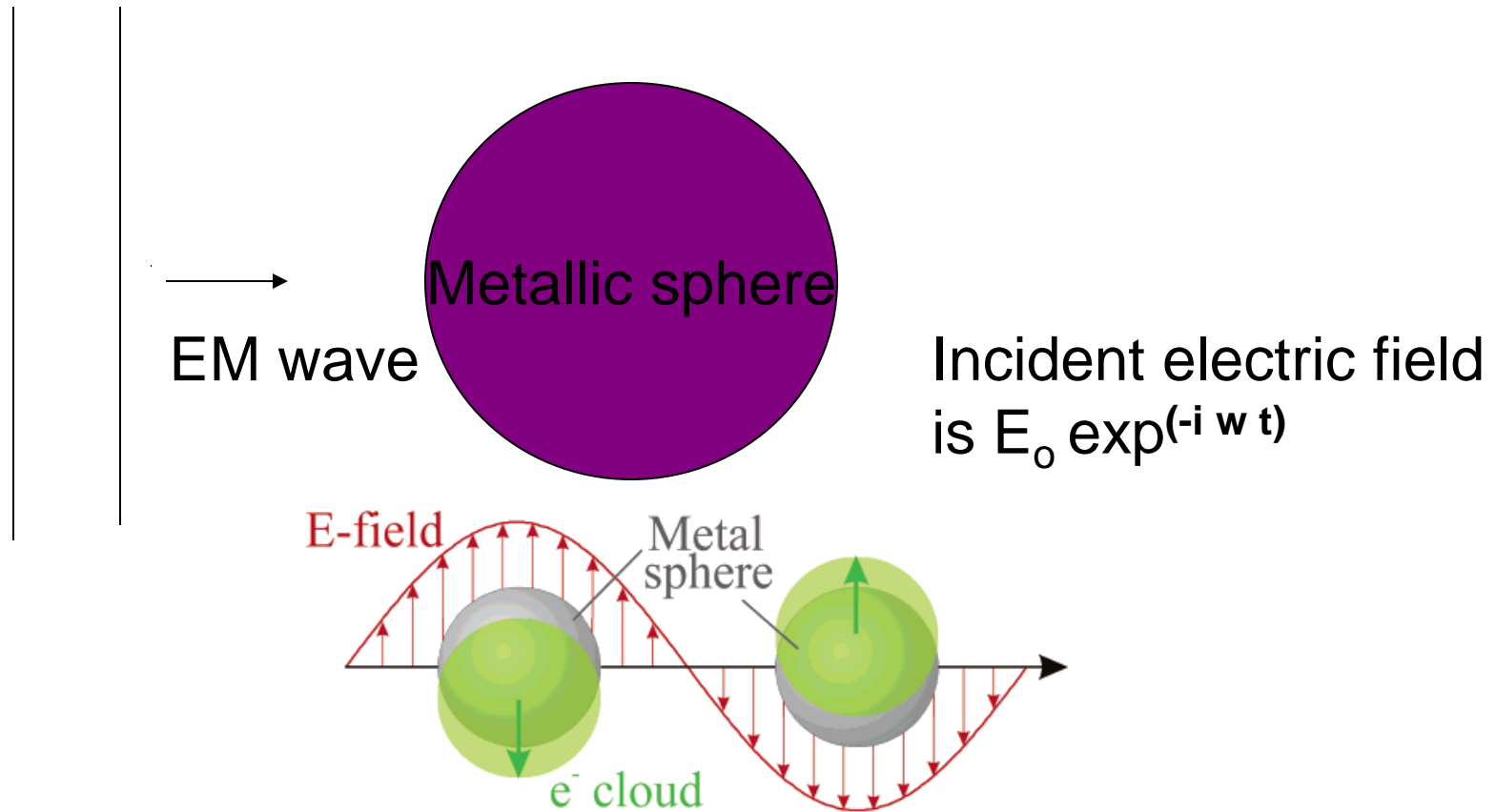
- An SP is a natural oscillation of the electron gas inside a gold nanosphere.
- SP frequency depends on the dielectric function of the gold, and the shape of the nanoparticle.



Electron cloud oscillates with frequency of SP; ions provide restoring force.



## Sphere in an applied electric field

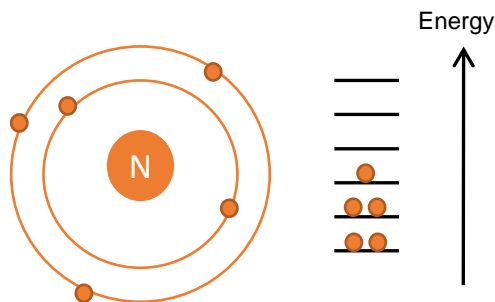


**Surface plasmon is excited when a long-wavelength electromagnetic wave is incident on a metallic sphere.**

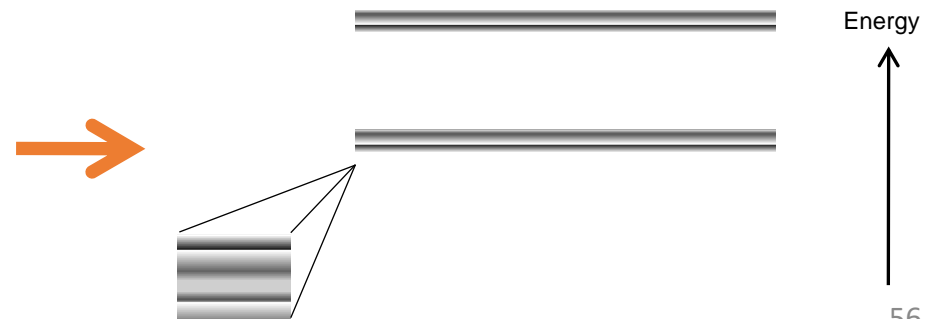
# Optical Properties

- Energy levels: from atoms to bulk materials...
  - The Pauli Exclusion Principle states that electrons can only exist in unique, discrete energy states.
  - In an atom the energy states couple together through spin-orbit interactions to form the energy levels commonly discussed in an introductory chemistry course.
  - When atoms are brought together in a bulk material, the energy states form nearly continuous bands of states, or in semiconductors and insulators, nearly continuous bands separated by an energy gap.

Atoms: Discrete Energy Levels



Bulk Materials: Band Structures

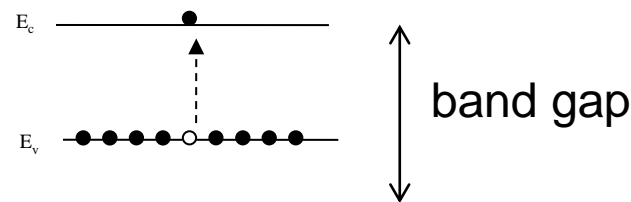




# Optical Properties

- Energy levels
  - In semiconductors and insulators, the **valance band** corresponds to the ground states of the valance electrons.
  - In semiconductors and insulators, the **conduction band** corresponds to excited states where electrons are a free to move about in the material and participate in conduction.
  - In order for conduction to take place in a semiconductor, electrons must be excited out of the valance band, across the **band gap** into the conduction band. This process is called **carrier generation**.
  - Conduction takes place due to the empty states in the valence band (holes) and electrons in the conduction band.

Electron  
excited into  
conduction  
band



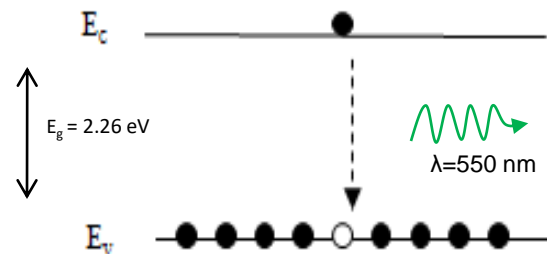
# Optical Properties

- Energy level spacing
  - In semiconductors and insulators a photon with an energy equal to the band gap energy is emitted when an electron in the conduction band recombines with a hole in the valance band.
  - The electronic band structure of a semiconductor dictates its optical properties.
  - GaP, a material commonly used for **green** LEDs, has an intrinsic band gap of 2.26 eV. Carrier recombination across the gap results in the emission of XXX nm light ??.

$$E = \frac{hc}{\lambda} \rightarrow \lambda = \frac{hc}{E}$$

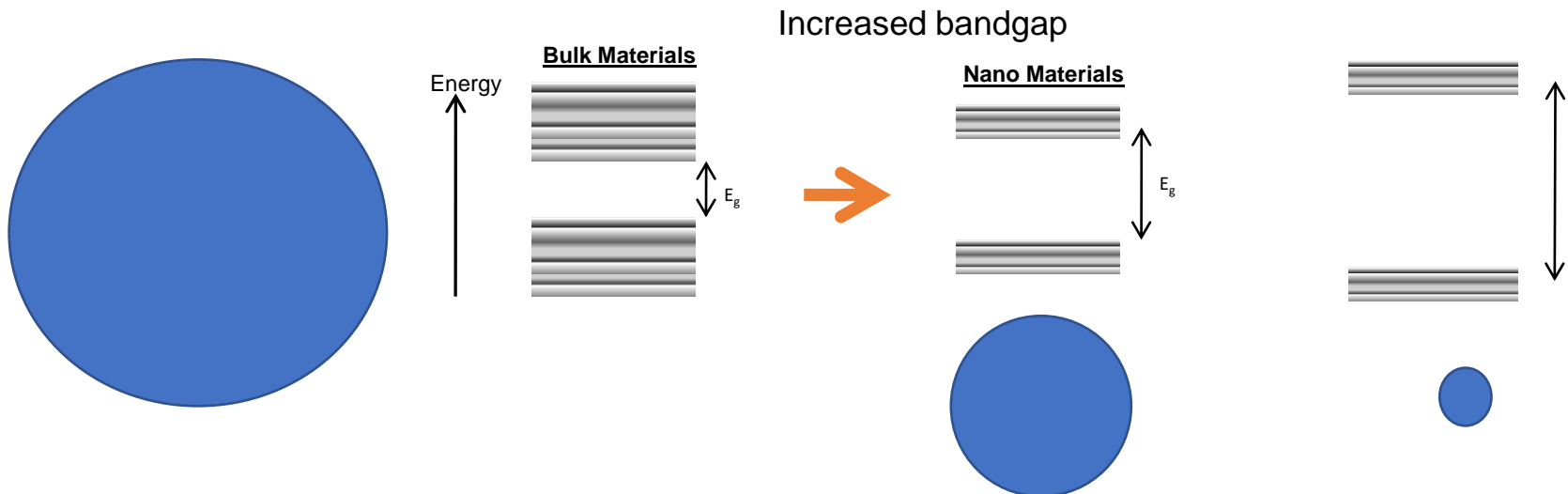
$$\lambda = \frac{(4.136 * 10^{-15} \text{ eV} \cdot \text{s})(2.998 * 10^8 \text{ m/s})}{2.26 \text{ eV}}$$

$$\lambda \cong 550 \text{ nm}$$



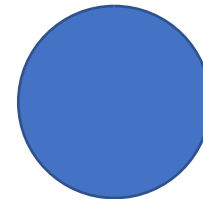
# Optical Properties

- Energy level spacing and quantum confinement
  - The reduction in the number of atoms in a material results in the confinement of normally delocalized energy states.
  - Electron-hole pairs become spatially confined when the dimensions of a nanoparticle approach the de Broglie wavelength of electrons in the conduction band.
  - As a result the spacing between energy bands of semiconductor or insulator is **increased** (Similar to the *particle in a box*)



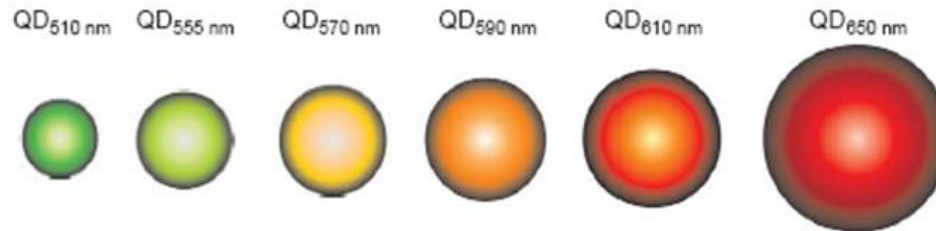
# Optical Properties

- Energy level spacing and quantum confinement
  - Semiconductor NPS that exhibit 3 dimensional confinement in their electronic band structure are called **quantum dots**.
  - What does this all mean?
    - **Quantum dots are having band gap tunable.**
    - We can engineer their optical properties by controlling their size.
    - For this reason quantum dots are highly desirable for Quantum devices and biological tagging.



# Optical Properties

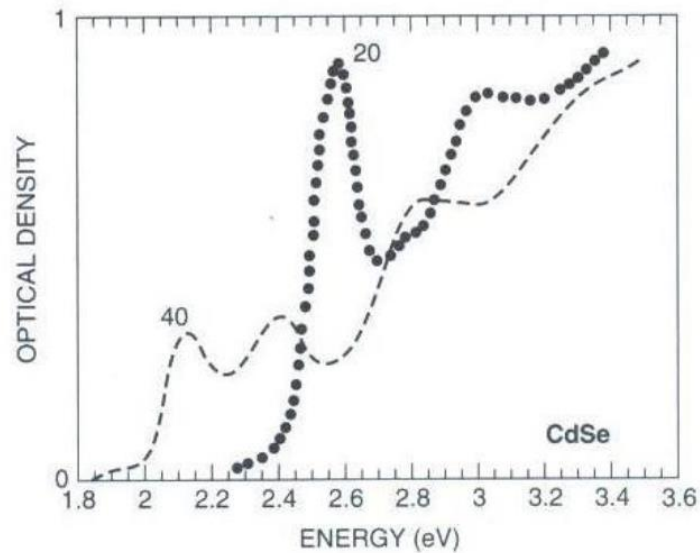
- Energy level spacing and quantum confinement
  - As semiconductor particle size is reduced the band gap is increased.
  - Absorbance and luminescence spectra are blue shifted with decreasing particle size.



Jyoti K. Jaiswal and Sanford M. Simon. **Potentials and pitfalls of fluorescent quantum dots for biological imaging.** TRENDS in Cell Biology Vol.14 No.9 September 2004

# Optical Properties

Example: Absorption Spectra of CdSe quantum dots



Optical absorption spectrum of CdSe for two nanoparticles having sizes 20 Å and 40 Å, respectively. [Adapted from D. M. Mittleman, *Phys. Rev.* **B49**, 14435 (1994).]

# Outline

- Definition and Examples
- Physical Properties
- Optical Properties
- **Electrical Properties**
- Health Concerns

# Electrical Properties

- Effect of structure on conduction
  - If nanostructures have fewer defects, one would expect increased conductivity vs macroscale
- Other electrical effects on the nanoscale:
  - Surface Scattering
  - Change in Electronic Structure
  - Ballistic Conduction
  - Discrete Charging
  - Tunneling Conduction
  - Charge confinement

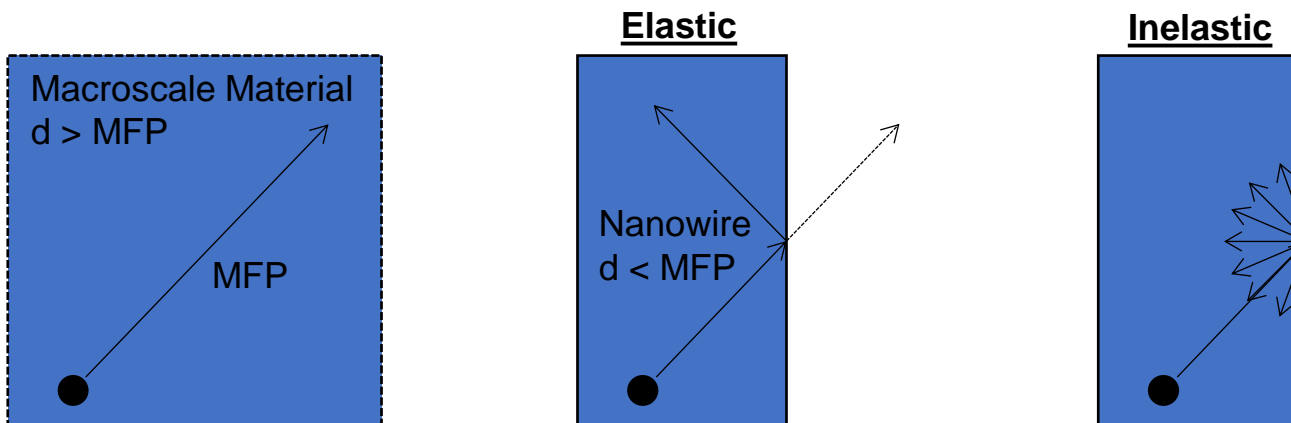


# Surface Scattering

- Electrons have a mean-free-path (MFP) in solid state materials.
- MFP is the distance between scattering events as charge carriers move through the material.
- In metals, the MFP is on the order of 10's of nanometers.
- If the dimensions of a nanostructure are smaller than the electron MFP, then surface scattering becomes a factor.

# Surface Scattering

- There are two types of surface scattering: elastic and inelastic.
- Inelastically scattered electrons are defined as the electrons which lose part of their energy (traveling speed becomes slower) through interactions between the electrons and a specimen.
- The probability of occurring inelastic scattering is small,  $\sim 1/10$  or less compared with that of elastic scattering in macroscale but not true in nanoscale.
- Elastic scattering does not affect conductivity, while inelastic scattering decreases conductivity.



# Health concern

# Potential Health Concerns

- Cause for concern:
  - Nanoparticles are similar in size to many biological structures → easily absorbed by the body.
  - Nanoparticles remain suspended in the environment for extended periods of time.
- Health Impacts of nanoparticles are expected to be dependant on composition and structure.

# Potential Health Concerns

- The potential health concerns of nanomaterials are largely unknown.